



**KALPSAR LAM PVT. LTD.**  
Survey no:-817, 818, Vill. Ghodasar, Nainpur,  
To Haldarvas Road, Ta-Mahemdabad, Dis - Kheda,  
Gujarat - 387 110, India.  
sales@kalpsar.com  
[www.kalpsar.com](http://www.kalpsar.com)



Ifil  
—mica

Ifil  
—mica

*beautiful colours*

P A S T E L  
C O L L E C T I O N S

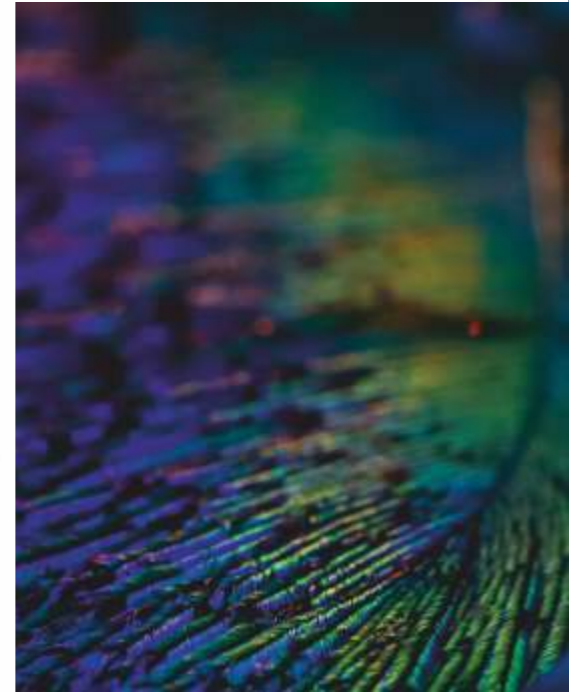
COLOUR

P A L E T T E

*about*

PASTEL  
COLLECTIONS

Pastel tones mingle softly, inviting a sense of calm and whimsy. Blush pinks, pale blues, and muted greens harmonize to create serene palettes. The collection breathes lightness, perfect for spaces that crave subtle charm.

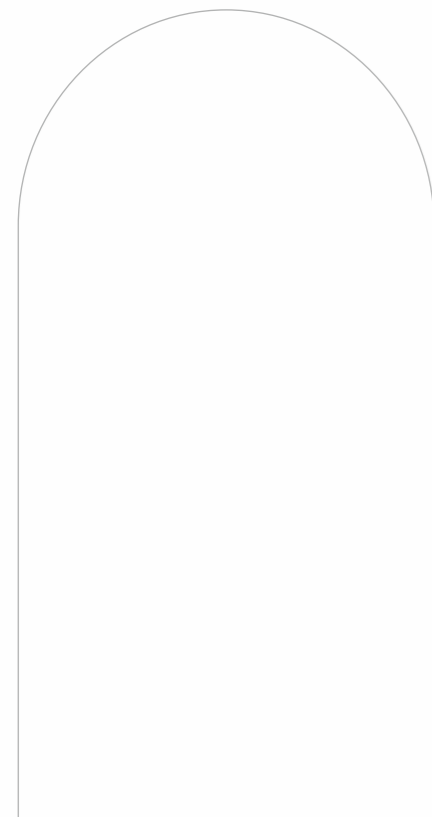


*Beautiful*  
colours perfect for  
your space

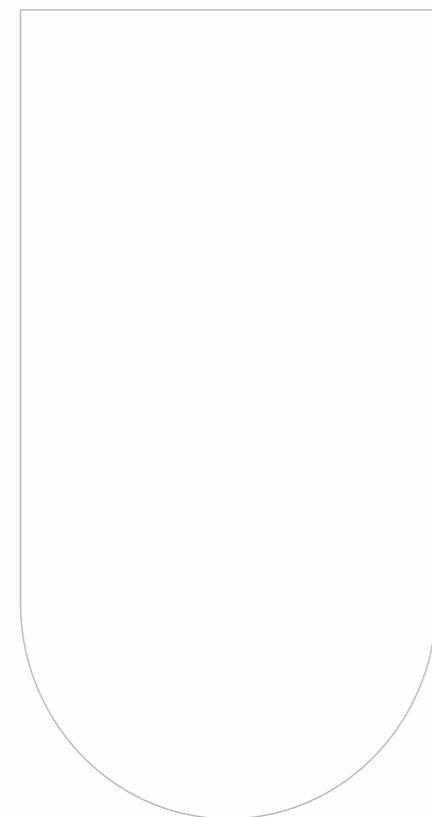
Textures range from faded velvet to matte ceramic, each piece whispering understated luxury. While the colors are gentle, the finishes add depth that keeps the collection engaging. This pastel ensemble balances nostalgia with modern restraint for versatile styling.

# The Collection

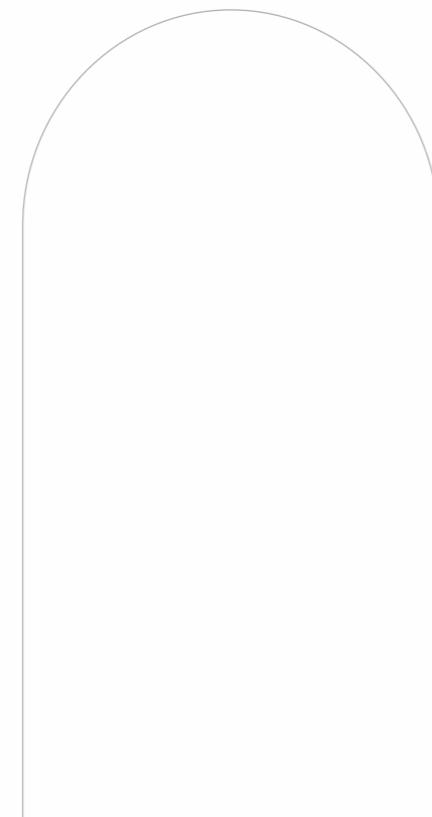
Sleek and splendid, each hue adds an elemental charm within decors.



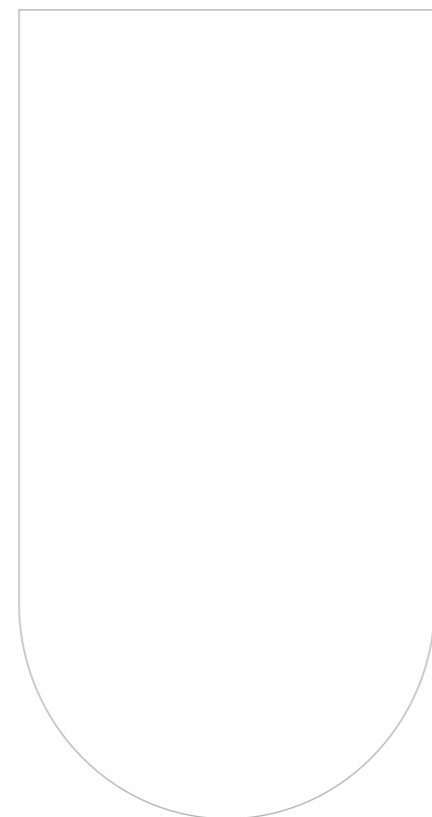
DYED  
WOOD



WIVER  
STONE



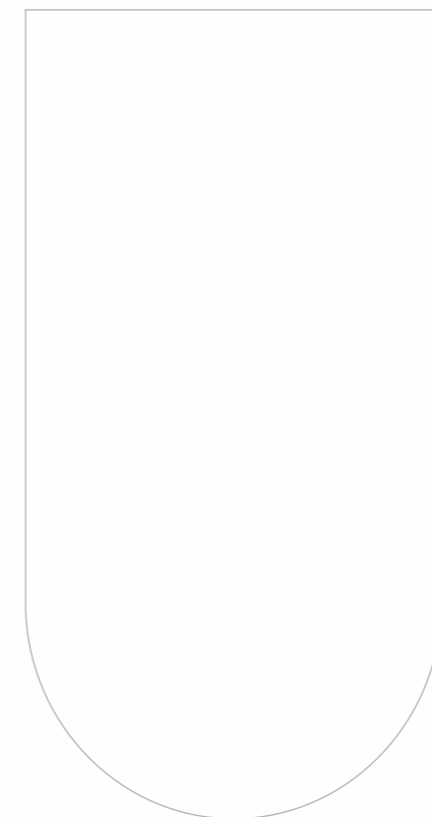
FURROW  
PANEL



MOSAIC  
WOOD



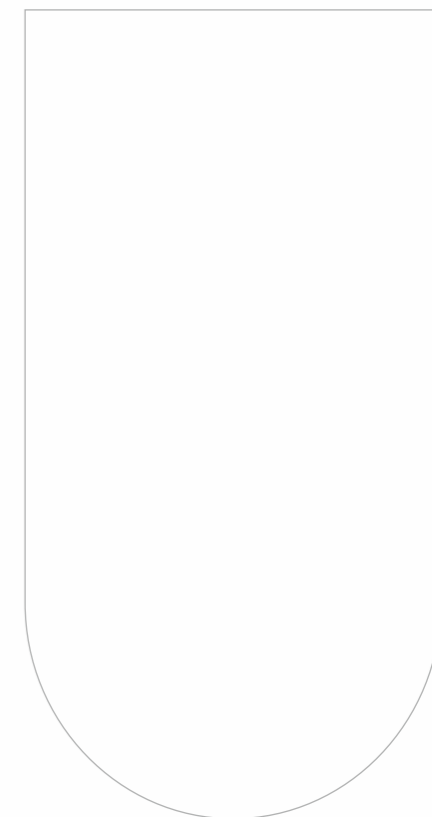
TWISTED  
FLUTE



ZIG ZAG



HIGH  
GLOSS



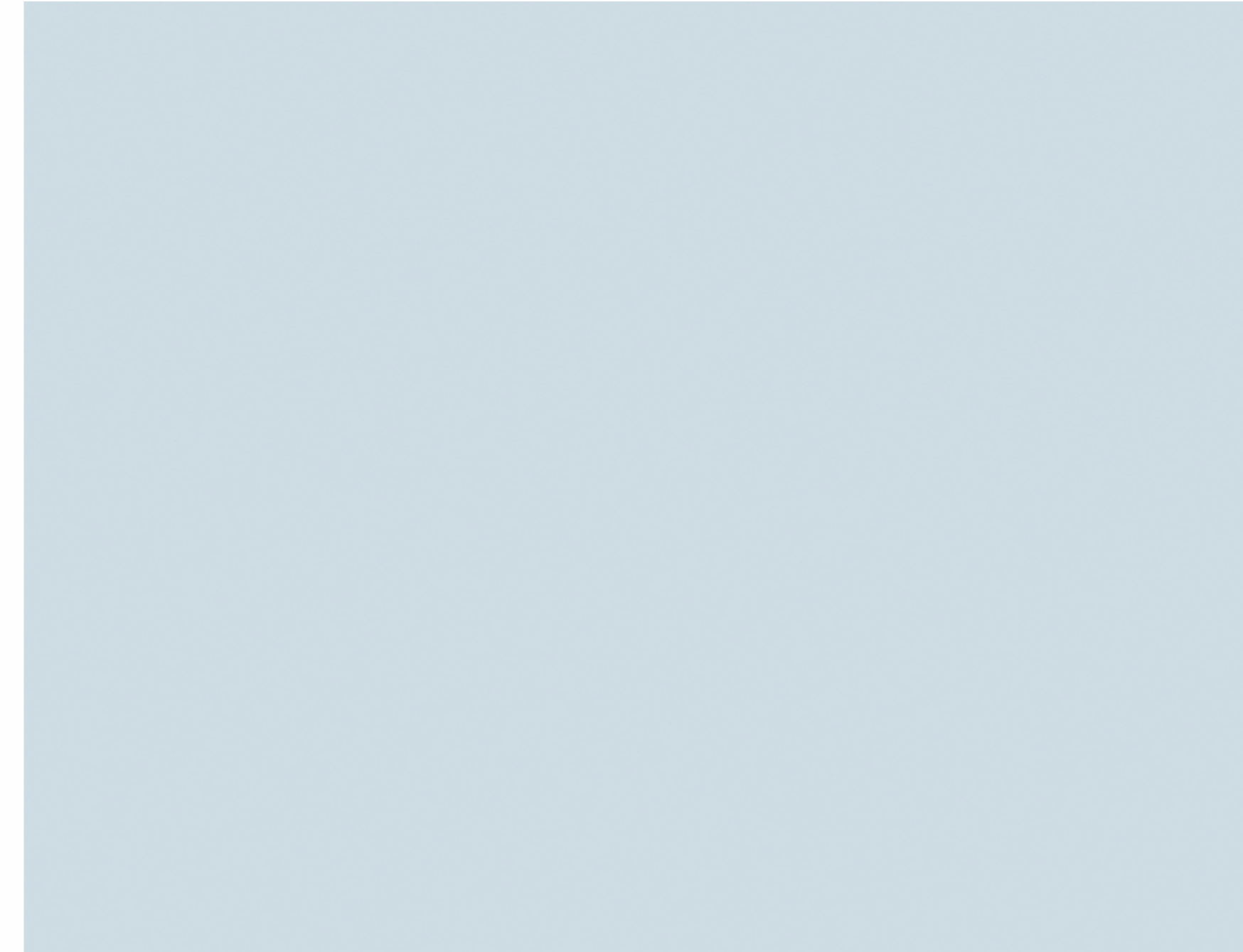
MATT  
MAX

# COLOR

A curated palette of accent laminates designed to elevate interiors with coordinated contrast; each hue provides defined focus points—from bold notes to subdued complements—within a cohesive range; daylight reveals varied warmth and depth across the collection, while artificial lighting harmonizes tones; surfaces remain durable and practical, suitable for cabinetry, panels, and accents; together, these colors offer flexible pairing with woods, neutrals, and metallics; the collection supports both statement features and refined, understated environments.

This collection emphasizes versatility and balance; select bold accents for islands, backsplashes, and feature walls to anchor rooms; soft complementary shades enhance textures—matte, satin, and subtle grain alike; neutral backdrops keep the palette cohesive across open-plan layouts; use trims, shelves, and paneling to unify schemes with consistent character; a reliable laminate range that delivers varied color accents within a single collection.

*The New Era of Pastel*



84 199 DW | FAIR BLUE

## CLASSIC TONES PAIR EVERYWHERE

Fresh, lively zones that stay engaging year-round.



A bright splash to wake up any room, instantly uplifting spaces.



84 115 DW | DARK GREY



84 122 DW | WARM GREY

## BRIGHT SPLASH TO UPLIFT



Gentle design for warm, timeless feels that endure daily wear.

Dynamic designs that make spaces look bigger, lighter, and more inviting.



84 128 DW | MYSORE IVORY



84 174 DW | PASTEL BROWN

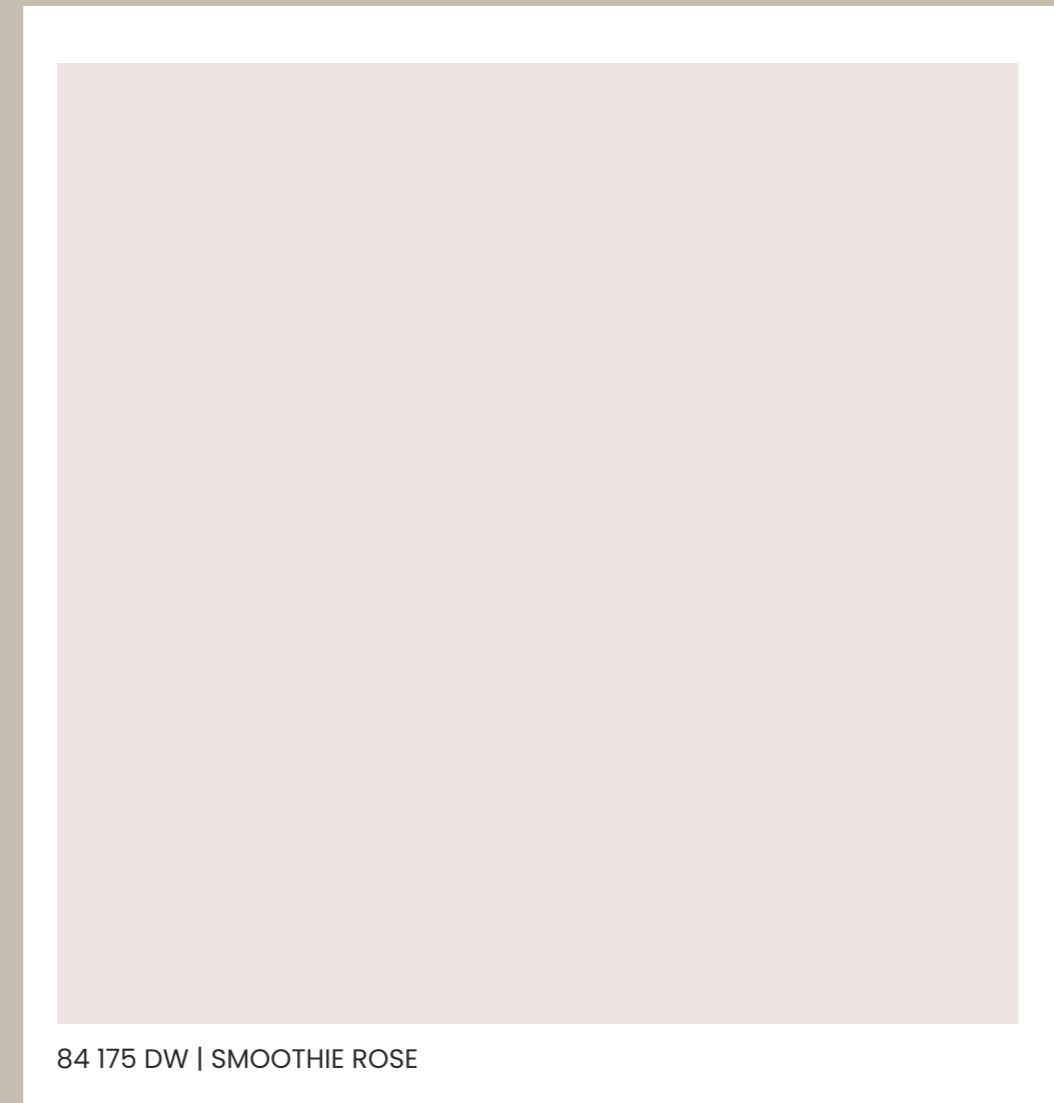
## GORGEOUS PATTERNS FOR WARMTH



Classic tones that pair with everything, creating lasting versatility.



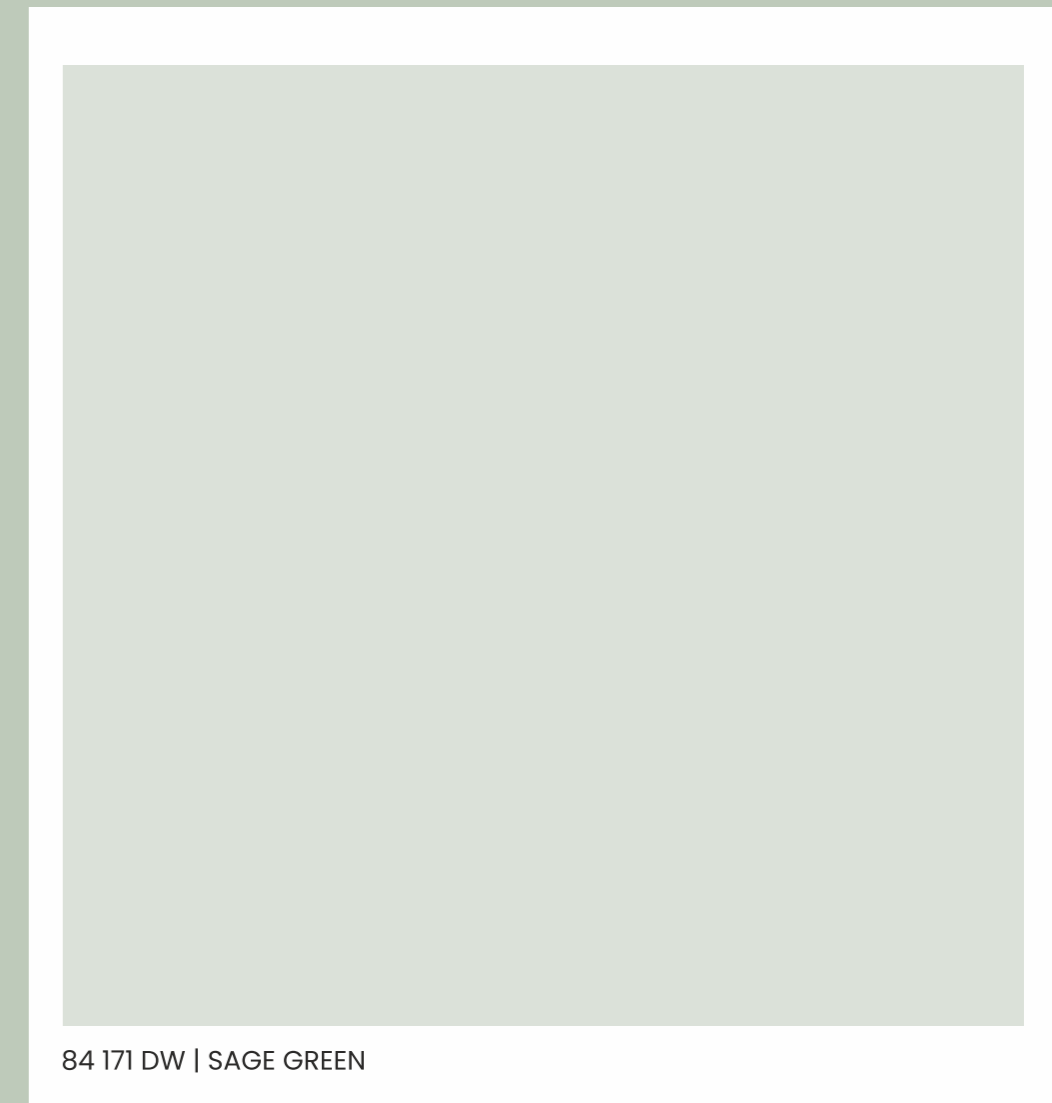
**SOFT  
SHADES  
BOLD  
STATEMENTS**



84 175 DW | SMOOTHIE ROSE

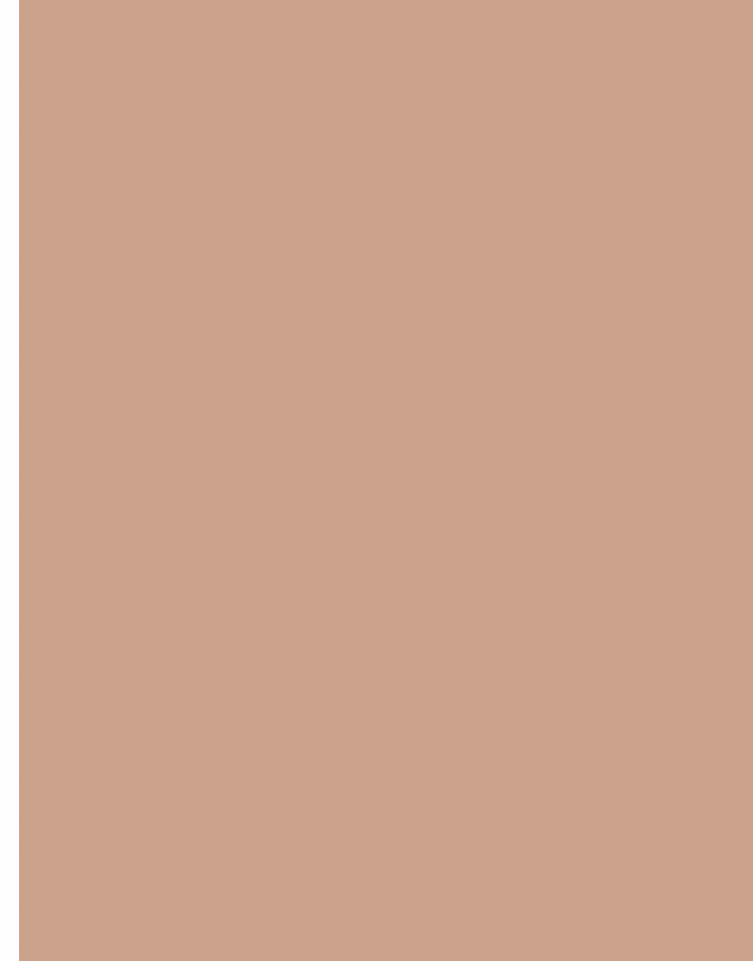


Clean lines for a modern, tidy look  
with minimal upkeep.



84 171 DW | SAGE GREEN

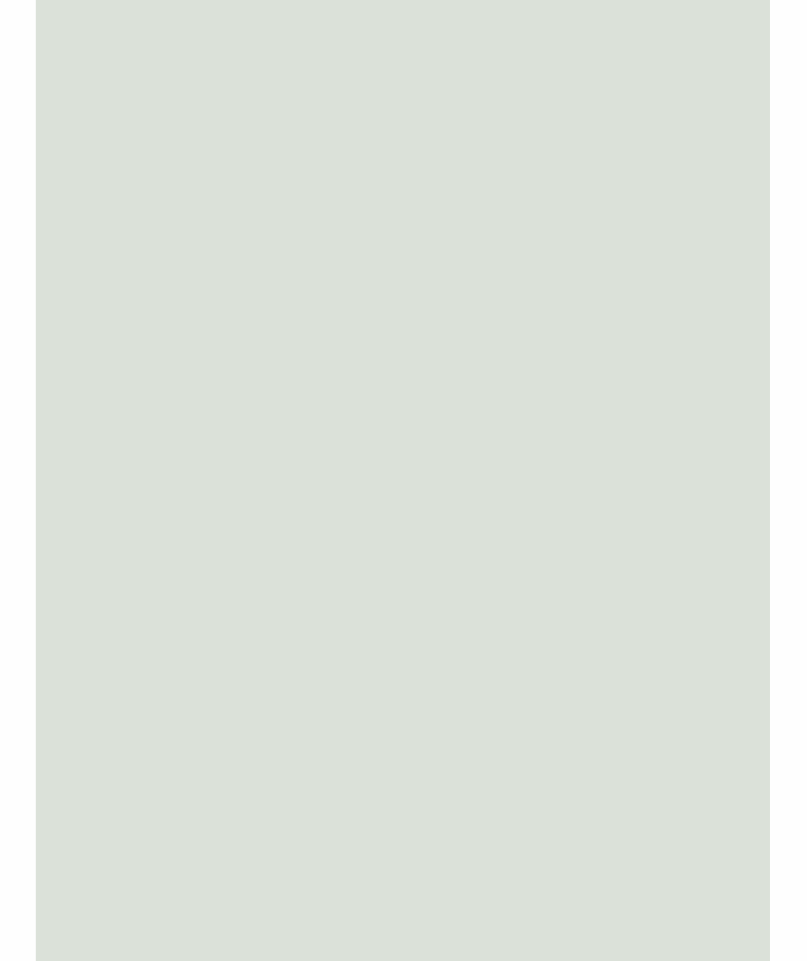
Deep contrast for strong, versatile balance against light furnishings.



89 174 WS | PASTAL BROWN



89 119 WS | CERAMIC GREY



89 171 WS | SAGE GREEN

Light tones for a calm vibe,  
ideal for relaxed homes.



89 134 WS | BLUE HORIZON

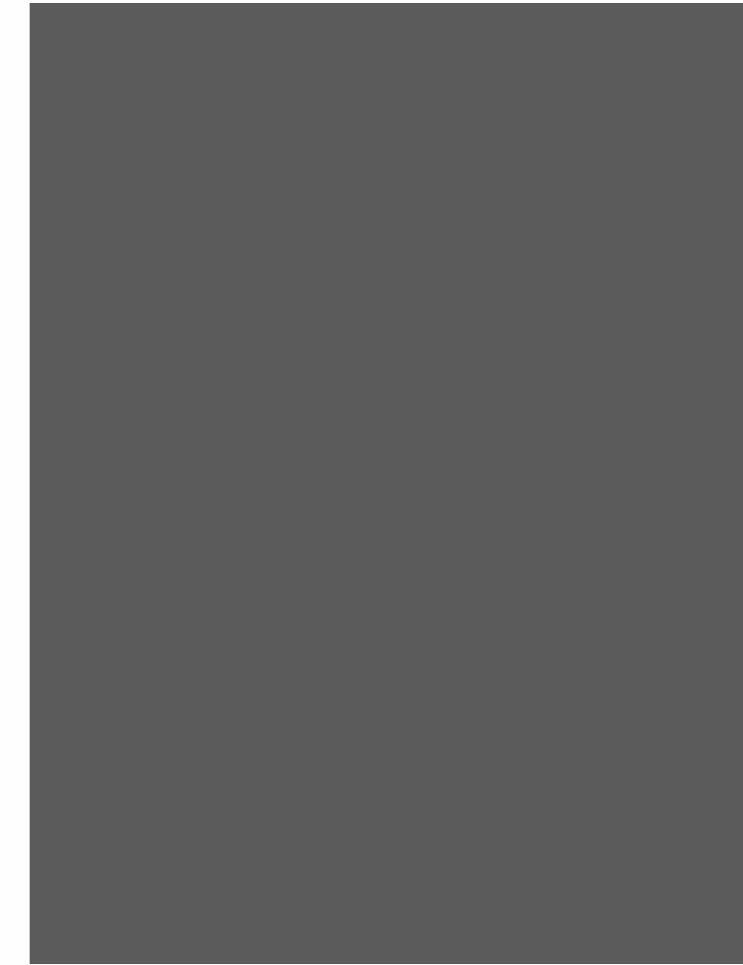


SOFT  
SHADES  
BOLD  
STATEMENTS

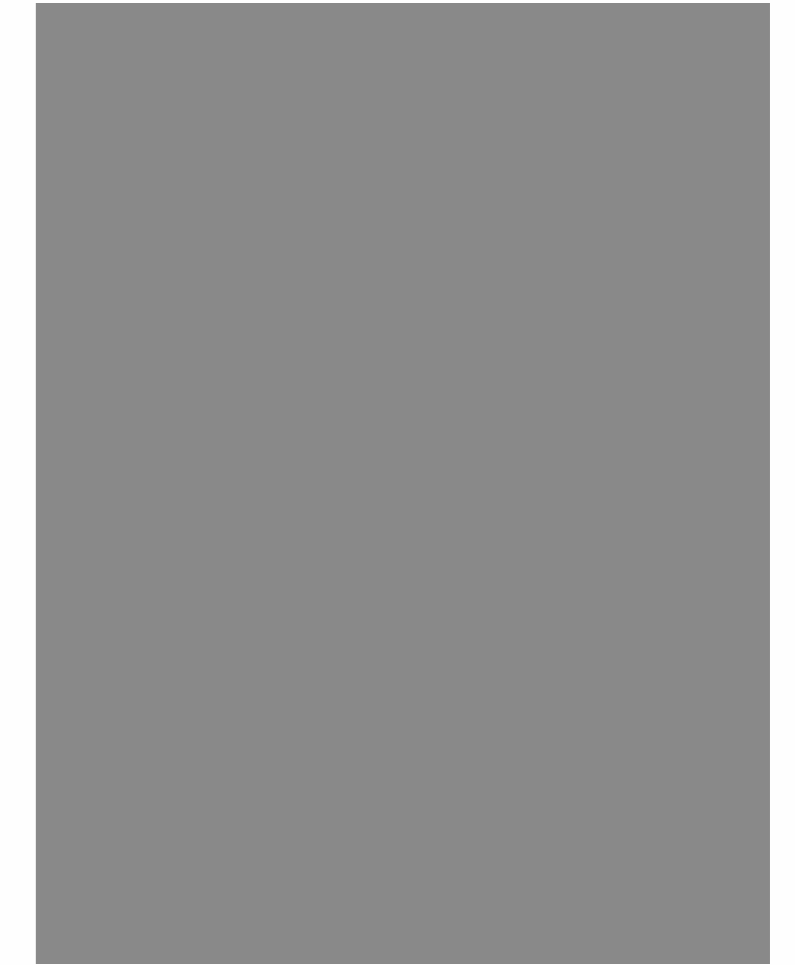
CLEAN LINES,  
MODERN  
SIMPLICITY



Balanced design that goes with  
metal and glass for cohesive  
styling.



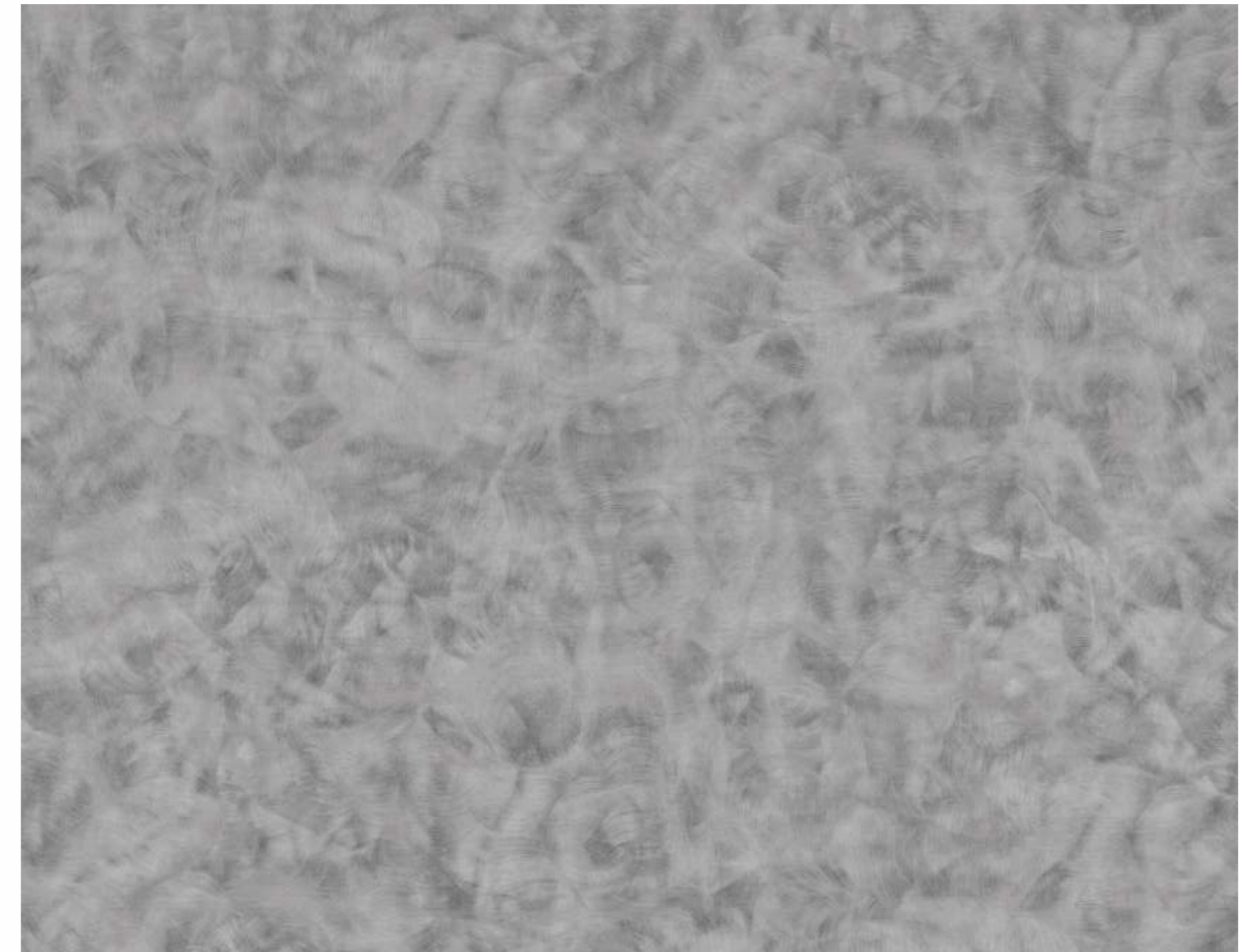
89 129 WS | CARBON GREY



89 165 WS | NICKLE GREY



USED  
82 338



82 338 SC | SWIRL GREY



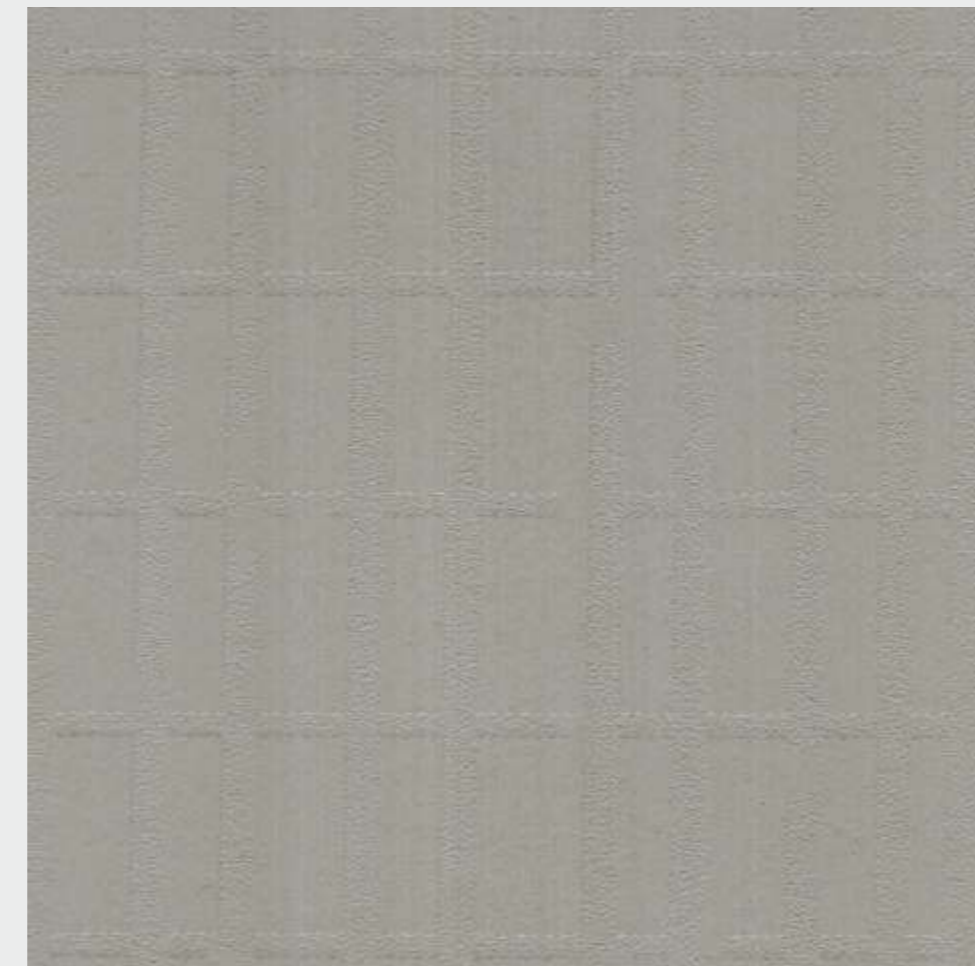
## SUBTLE LOOKS, LUXURY TOUCH

Driftwood-inspired look  
for relaxed spaces with  
everyday practicality.



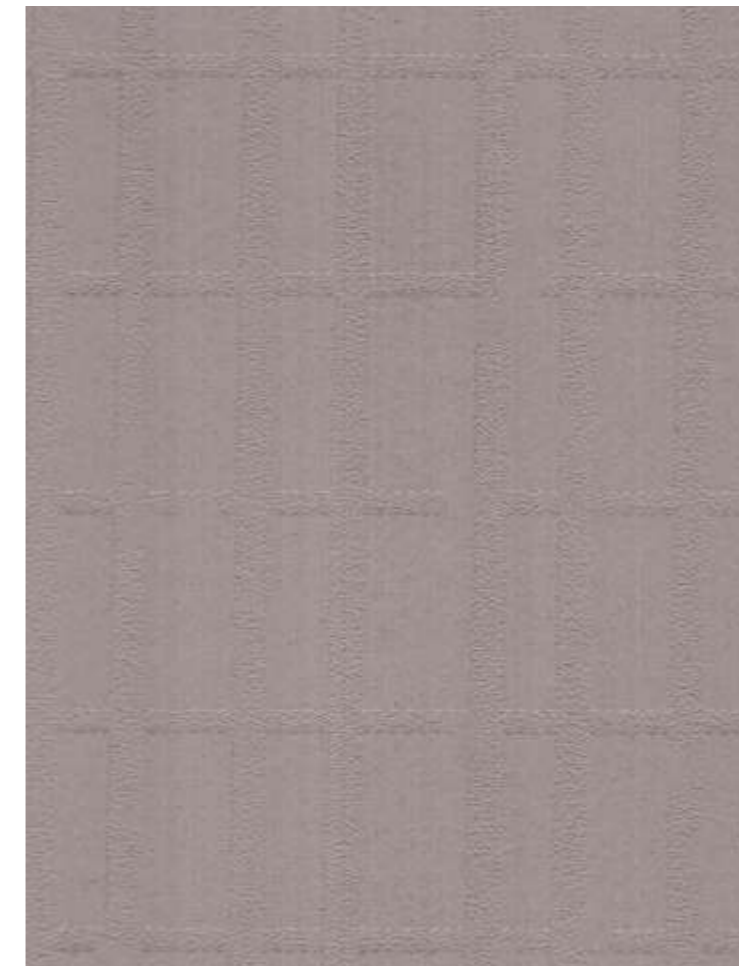
MTX 5112 | LIGHT GREY

DEEP  
CONTRAST  
LAMINATE  
BALANCE



85 122 FP | WARM GREY

Bold elements to express personality and energize quiet rooms.



85 163 FP | PEBBLE



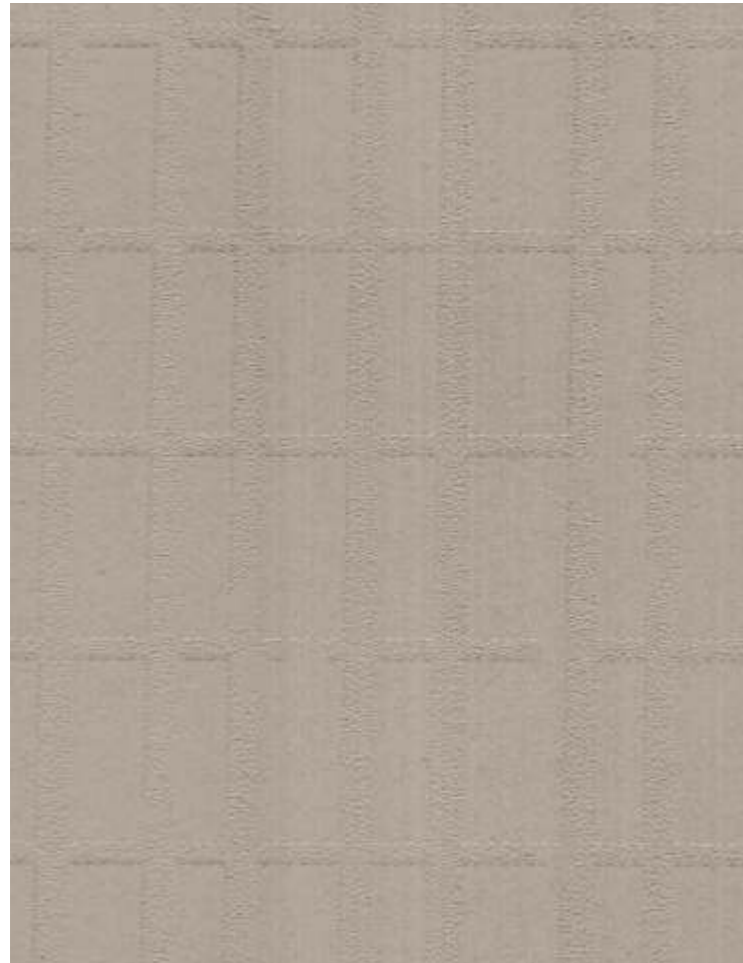
85 137 FP | GECKO GREEN

LAVISH  
EDGE OF  
EXCELLENCE

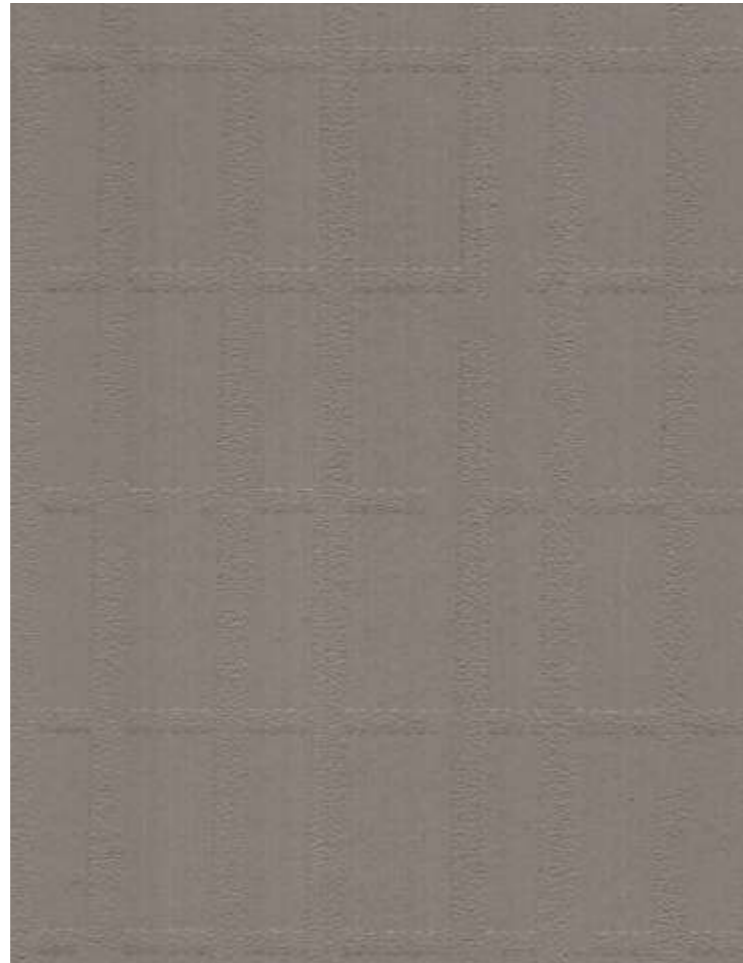


Simple grain for an eco-friendly touch, durable and stylish.

Balanced design for a contemporary feel with depth.



85 119 FP | CERAMIC GREY



85 124 FP | ROMAN COFFEE

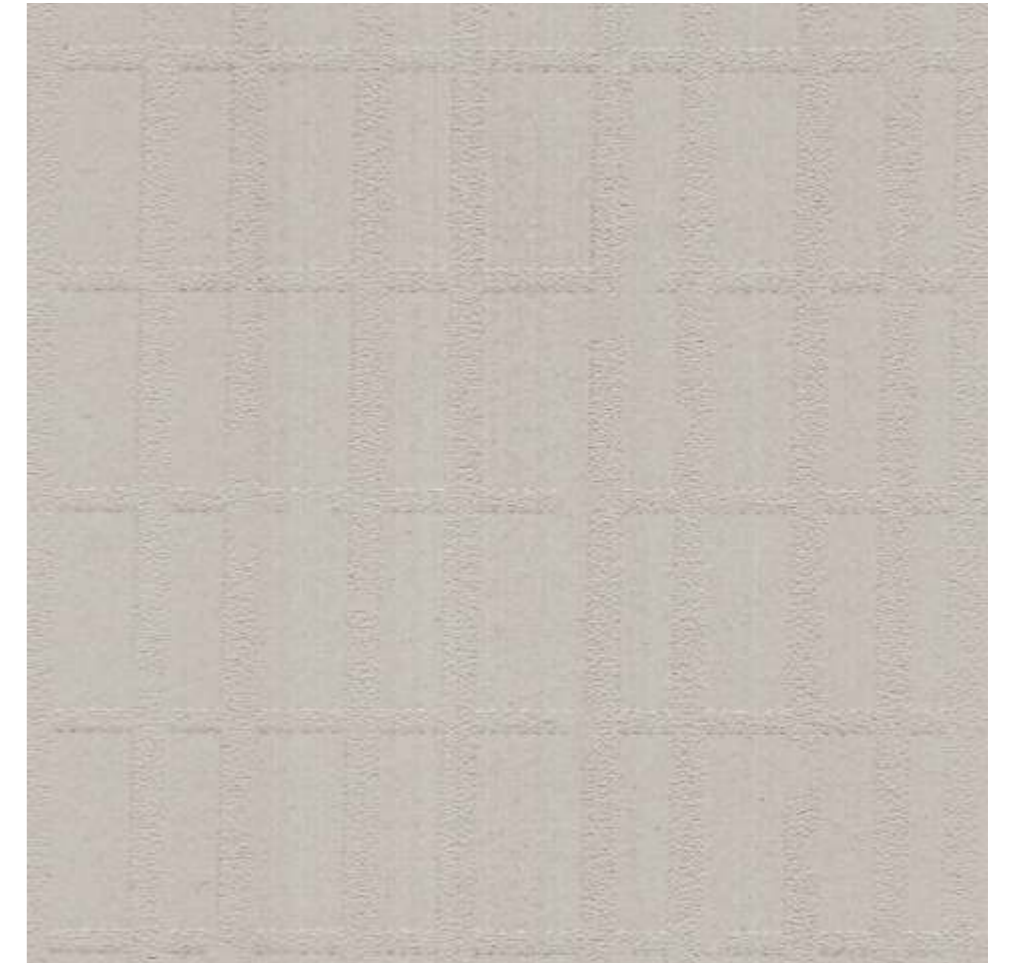
LIGHT  
TONES FOR  
CALMNESS



Clean brightness for spaces that stay fresh and timeless.

THE ART  
OF THE SUBTLE  
**SURFACE**

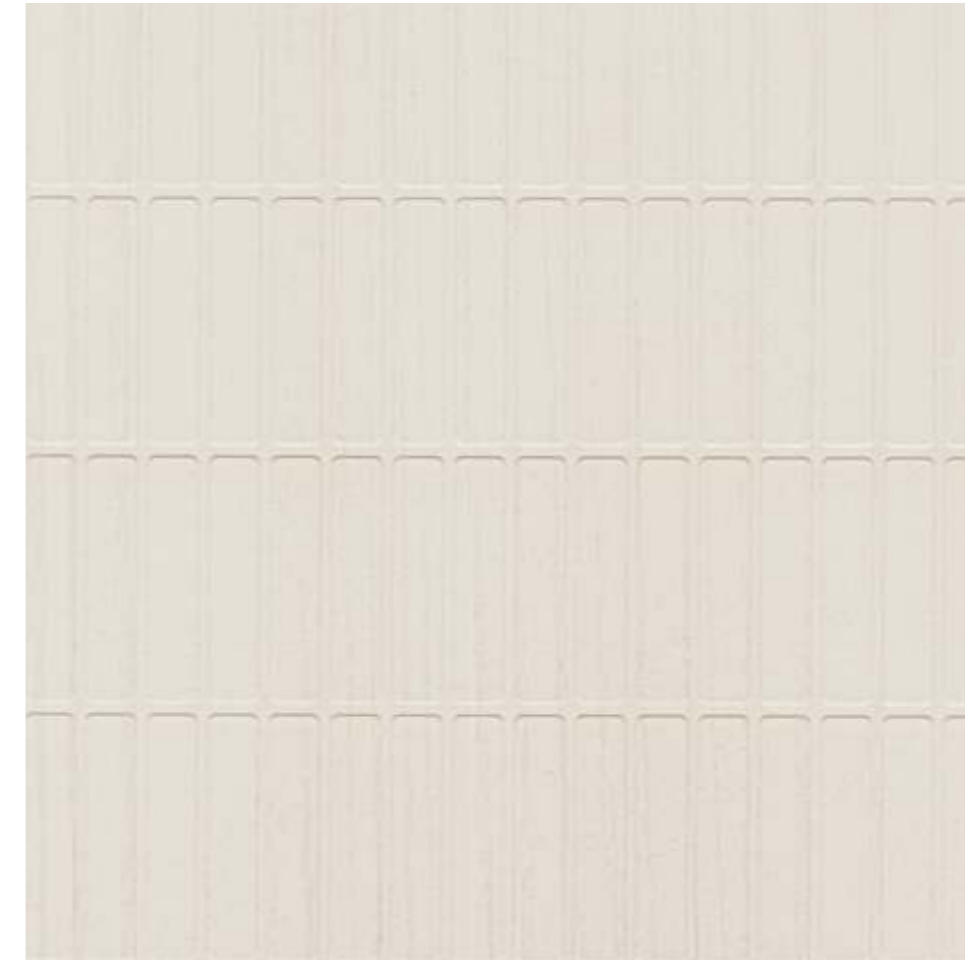
Subtle shine for a futuristic twist in modern interiors.



85 120 FP | BARLEY

Deep, rich ambiance for rooms with strong presence.

86 128 MW  
MYSORE IVORY  
▼



86 128 MW | MYSORE IVORY

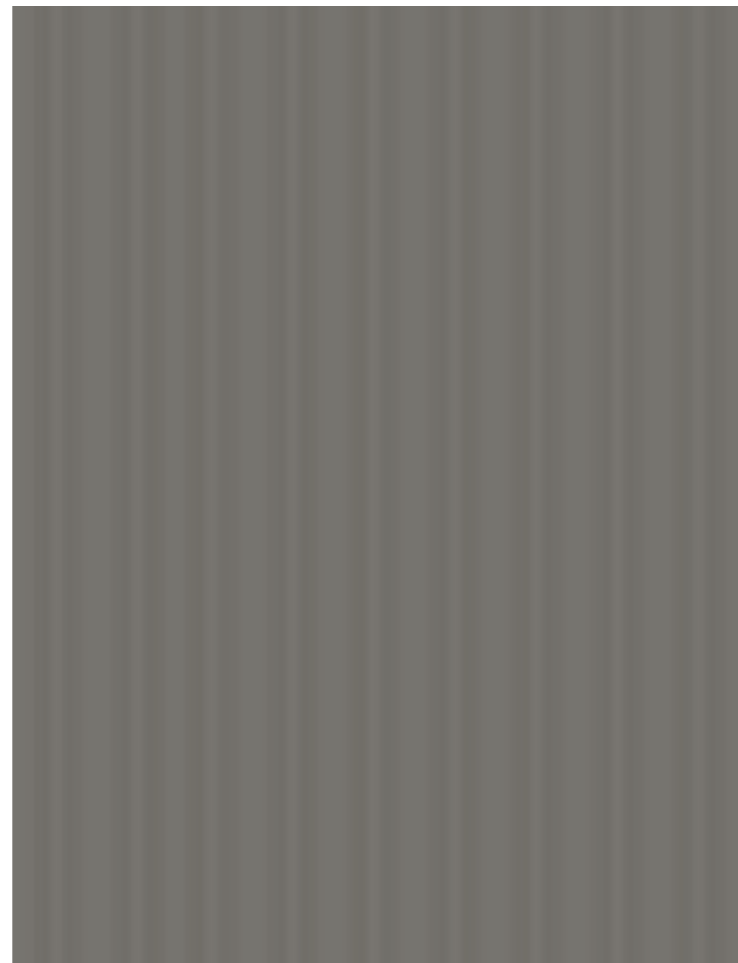


86 124 MW | ROMAN COFFEE



**BOLD ELEMENTS  
EXPRESS  
PERSONALITY**

. Soft neutral palette for easy, adaptable styling across interiors.



75 124 TF | ROMAN COFFEE



75 115 TF | DARK GREY



75 165 TF | NICKLE GREY



75 120 TF | BARLEY



75 123 TF | GREY CLOUD

HADES



71 115 ZZ | DARK GREY



SOFT  
SHADES  
BOLD  
STATEMENTS



71 164 ZZ | TUMBLE BEIGE



71 164 ZZ  
TUMBLE BEIGE  
▼



SOFT  
SHADES  
BOLD  
STATEMENTS



71 163 ZZ | PEBBLE



71137 ZZ  
GECKO GREEN  
▼



71137 ZZ | GECKO GREEN



CLEAN  
BRIGHTNESS  
TIMELESS  
FEEL



HG 5138 | PINK BLISS

HG 5139 | TIRAMISU

Subtle veins for a classy backdrop that blends anywhere.



HG 5141 | ACCENT BLUE

HG 5142 | STELLAR SILVER

HG 5140 | TRULY WHITE



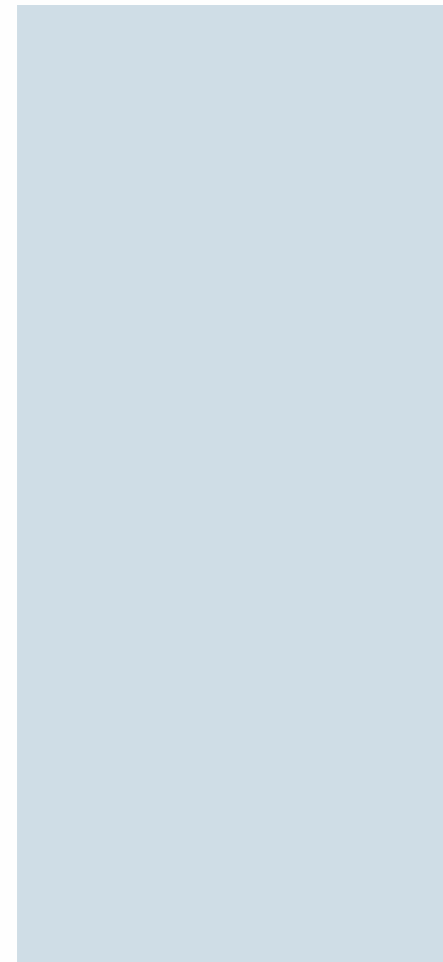
BALANCED  
DESIGN WITH  
DEPTH



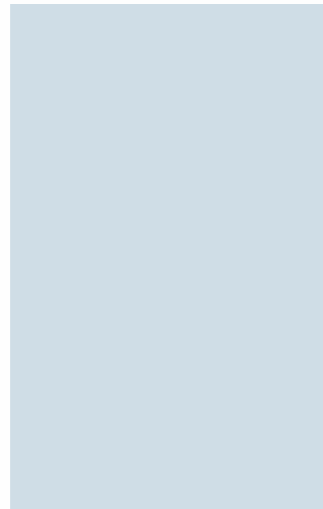
Warm glow for cozy warmth  
in living and dining zones.

Industrial look for urban, durable surfaces  
with minimal maintenance.

### SOFT NEUTRAL PALETTE

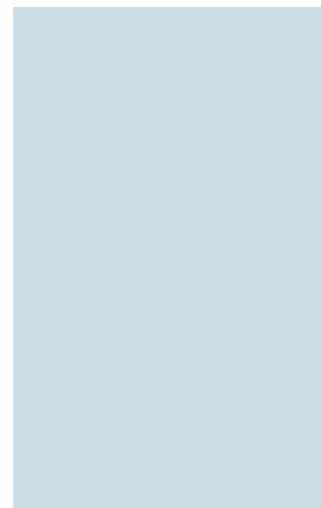


84 199 DW | FAIR BLUE



HG 5199 | FAIR BLUE

Classic join with  
modern light tones for  
balanced, timeless  
appeal.



MTX 5199 | FAIR BLUE



MTX 5190 | OCEAN BLUE



HG 5190 | OCEAN BLUE

### SUBTLE SHINE FUTURISTIC TWIST



89 134 WS | BLUE HORIZON



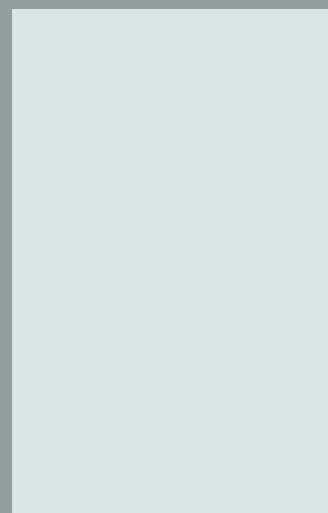
HG 5134 | BLUE HORIZON

Fresh accents to brighten  
the ambiance of multi-  
functional spaces with  
zest.



MTX 5134 | BLUE HORIZON

### TEXTURED FEEL SOFT TOUCH



HG 5198 | WATER GREEN



MTX 5198 | WATER GREEN

## DEEP RICH AMBIANCE

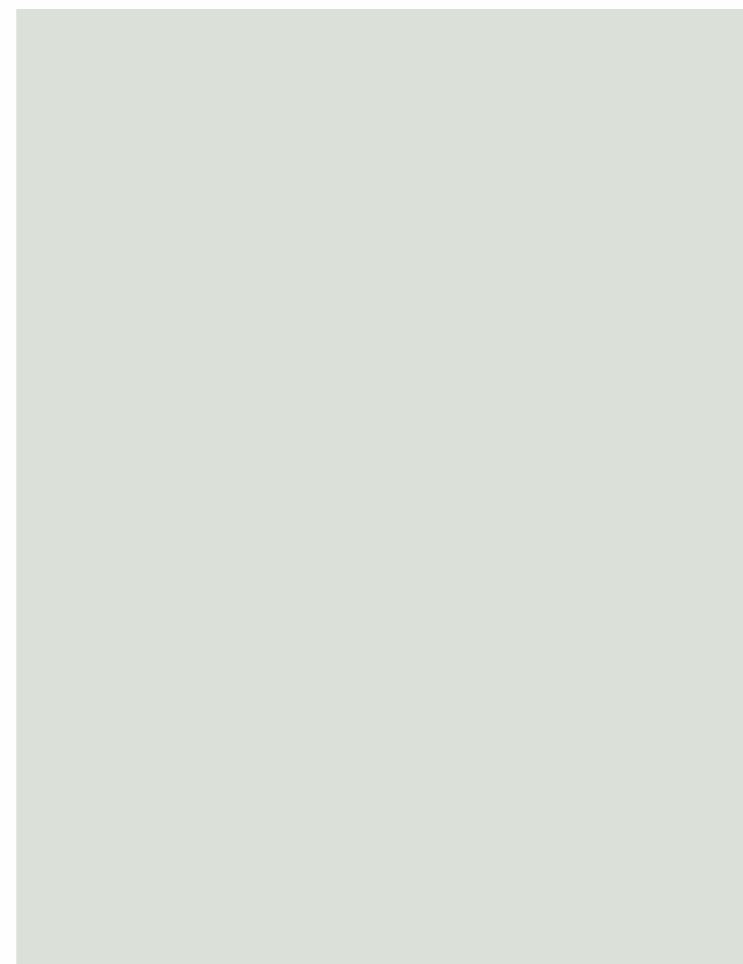
Gentle accents to liven neutrals gently, adding chic personality.



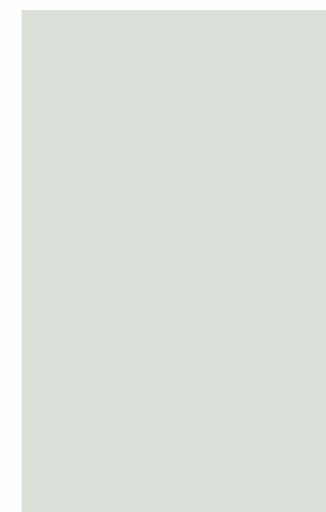
HG 5133 | TURQUOISE



MTX 5133 | TURQUOISE



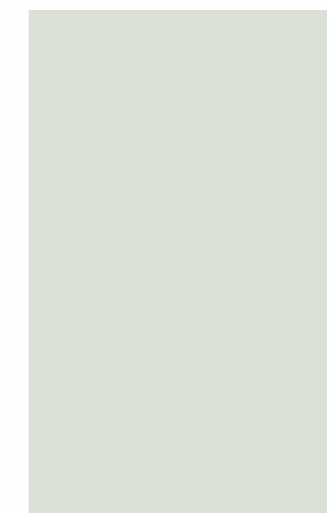
89 171 WS | SAGE GREEN



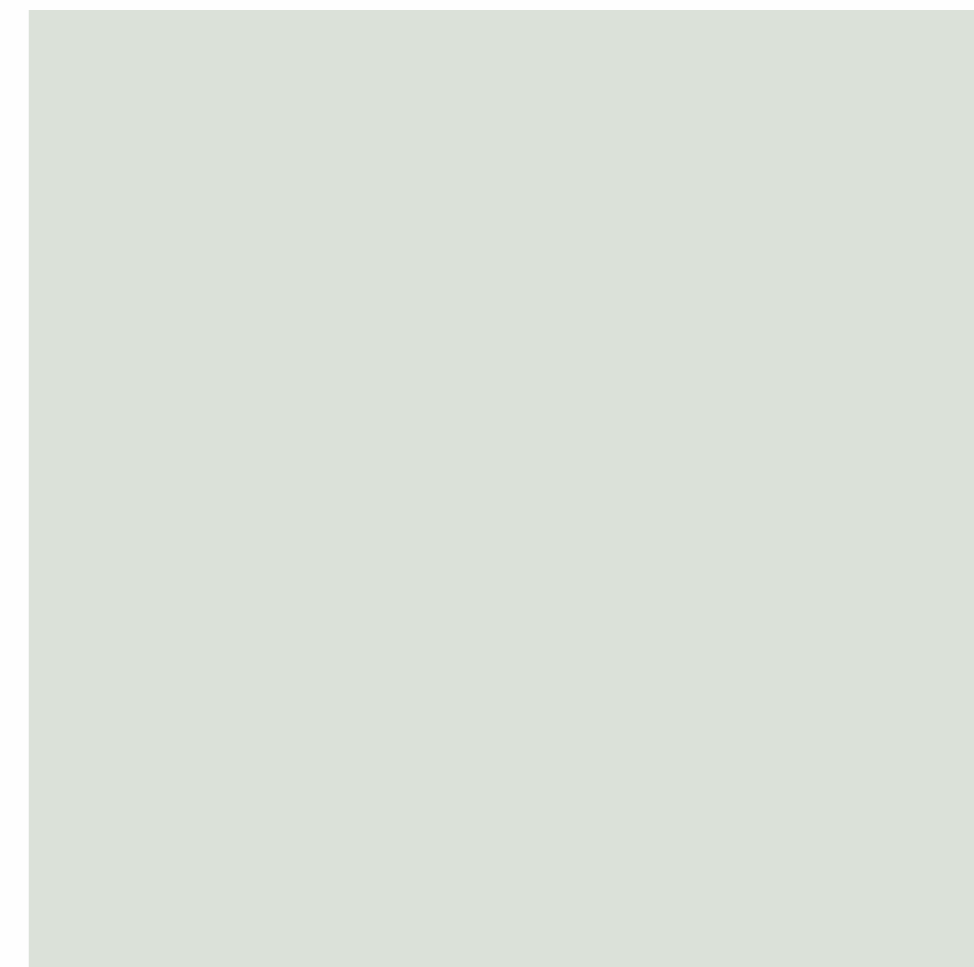
HG 5171 | SAGE GREEN

## LAVISH EDGE OF EXCELLENCE

A bright splash to wake up any room, instantly uplifting spaces.



MTX 5171 | SAGE GREEN



84 171 DW | SAGE GREEN

Textured feel that's soft to touch and easy to clean.



71 137 ZZ | GECKO GREEN



85 137 FP | GECKO GREEN



MTX 5137 | GECKO GREEN

Classic join with modern light tones for balanced, timeless appeal.



HG 5137 | GECKO GREEN

### SOFT NEUTRAL PALETTE

ifil  
mica



HG 5162 | SEA GREEN



MTX 5162 | SEA GREEN



HG 5131 | ALPINE GREEN



MTX 5131 | ALPINE GREEN

TEXTURED FEEL THAT'S SOFT  
TO TOUCH AND EASY TO CLEAN.



HG 5125 | CUMIN



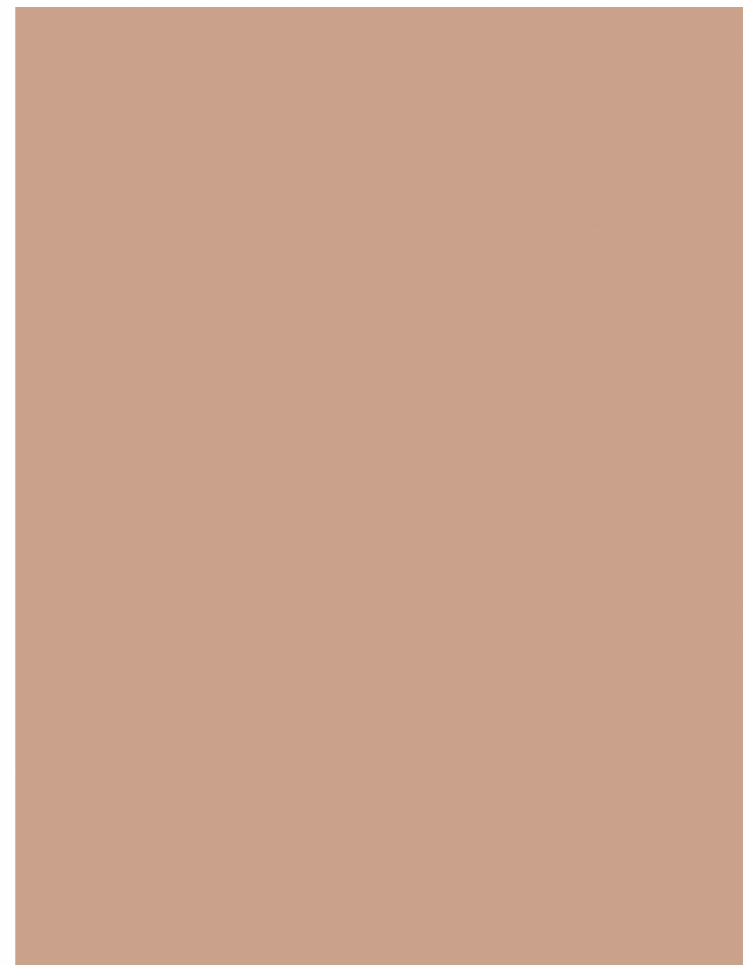
MTX 5125 | CUMIN



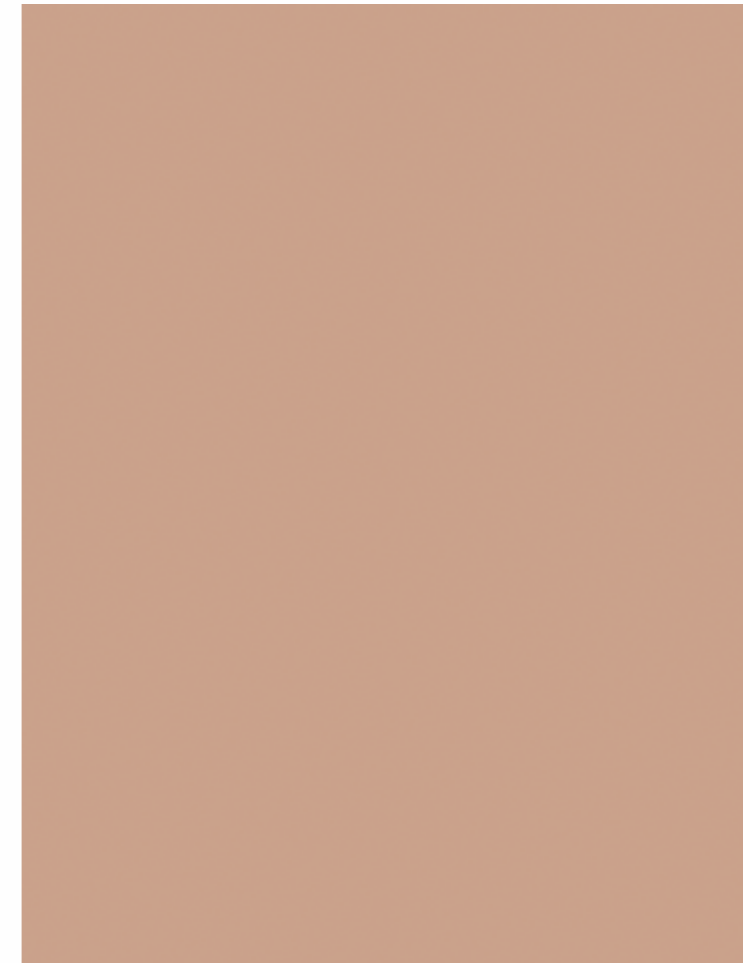
HG 5174 | PASTEL BROWN



MTX 5174 | PASTEL BROWN



84 174 DW | PASTEL BROWN



89 174 WS | PASTAL BROWN



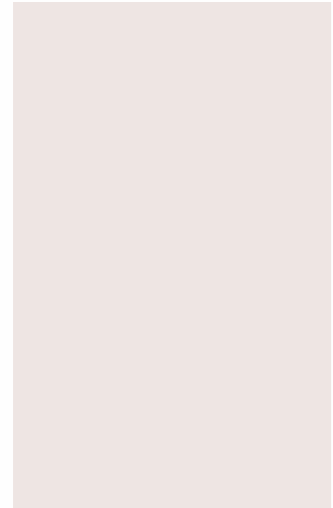
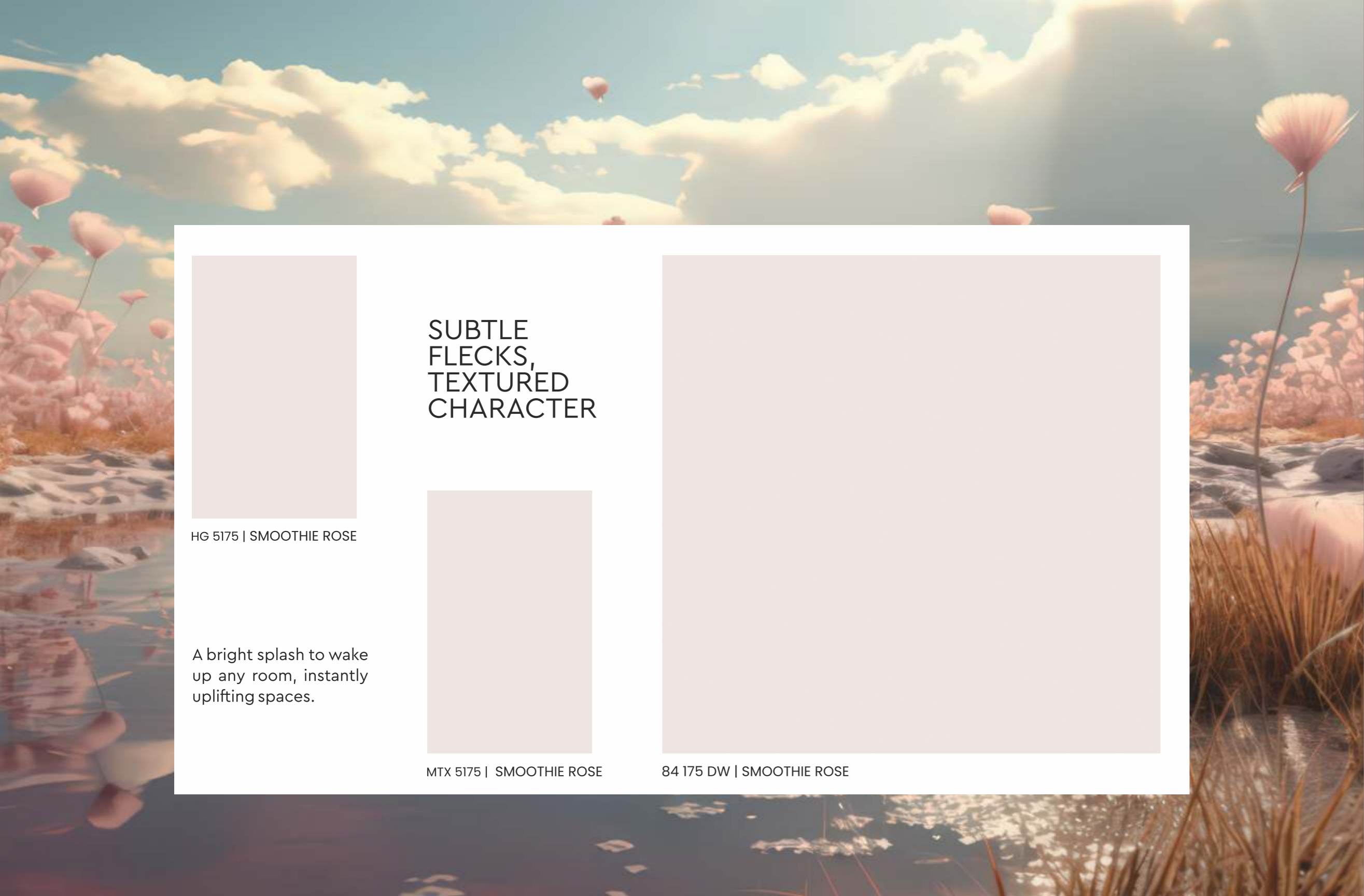
HG 5132 | LUCID DREAM

Rich accents for  
dramatic rooms with  
depth.



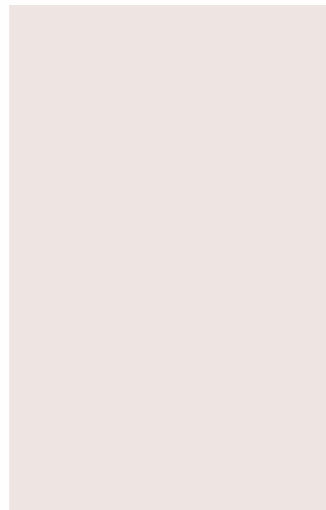
MTX 5132 | LUCID DREAM

SOFT  
NEUTRAL  
PALETTE

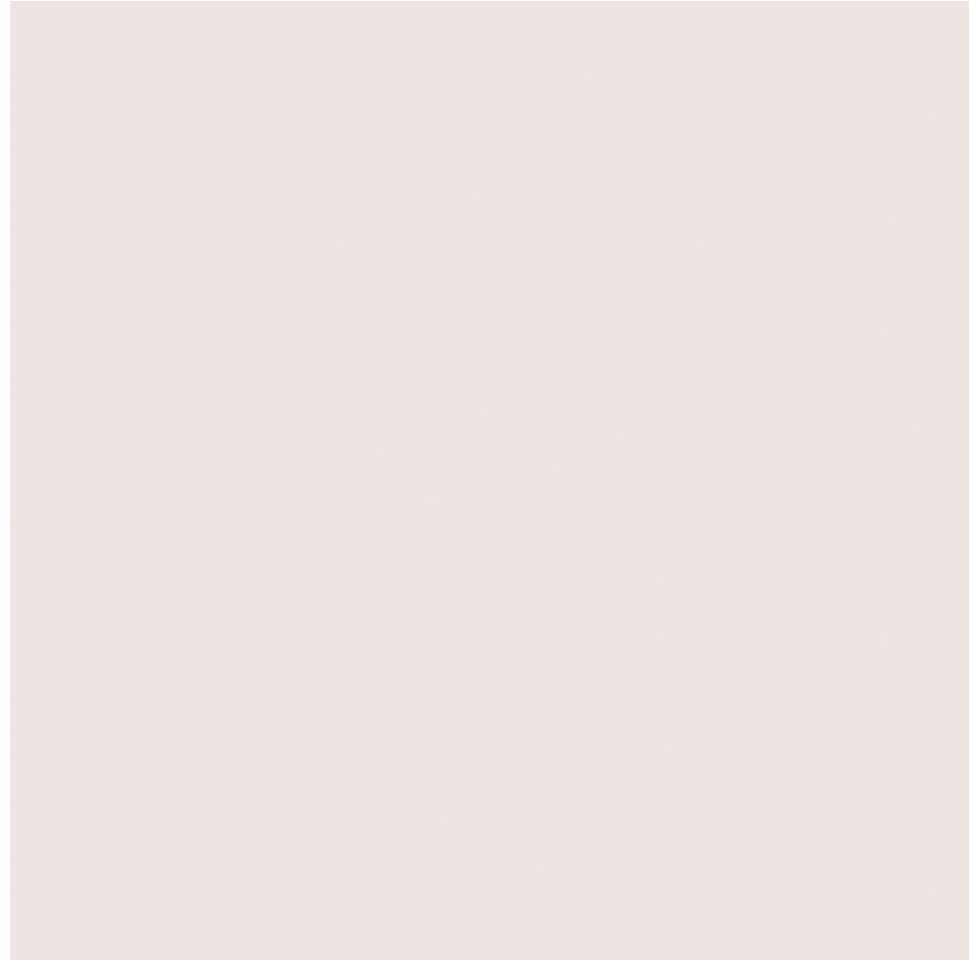


HG 5175 | SMOOTHIE ROSE

SUBTLE  
FLECKS,  
TEXTURED  
CHARACTER



MTX 5175 | SMOOTHIE ROSE



84 175 DW | SMOOTHIE ROSE

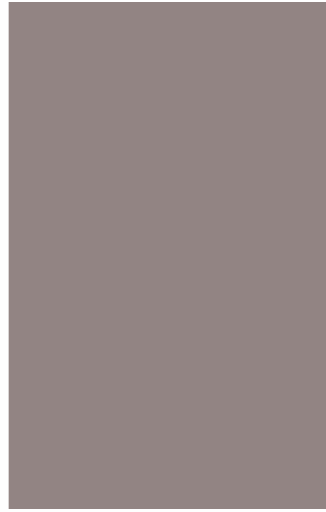
A bright splash to wake  
up any room, instantly  
uplifting spaces.

Cool, calm tones for productive  
areas and focus.

SUNLIT SPACES  
INVITING  
GATHERINGS



HG 5163 | PEBBLE



MTX 5163 | PEBBLE

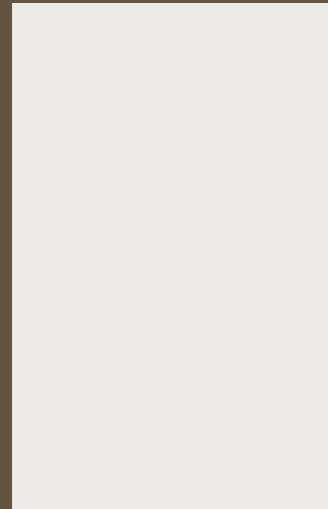
Neutral sand tone for  
natural openness in  
open-plan layouts.



71 163 ZZ | PEBBLE



85 163 FP | PEBBLE



HG 5107 | OFF WHITE



MTX 5107 | OFF WHITE

### WARM GLOW FOR COMFORT

Mixed tones for versatile pairing across palettes.



HG 5108 SAND BASE



HG 5108 | SAND BASE



MTX 5108 | SAND BASE

### NEUTRAL SAND TONE OPENNESS

Subtle glow for soft, elegant spaces with understated charm.



HG 5158 | BEIGE



MTX 5158 | BEIGE



Sleek surface for spaces that feel streamlined.



86 124 MW | ROMAN COFFEE



HG 5124 | ROMAN COFFEE

Fresh accents to brighten the ambiance of multi-functional spaces with zest.



MTX 5124 | ROMAN COFFEE

TEXTURED  
FEEL  
SOFT  
TOUCH

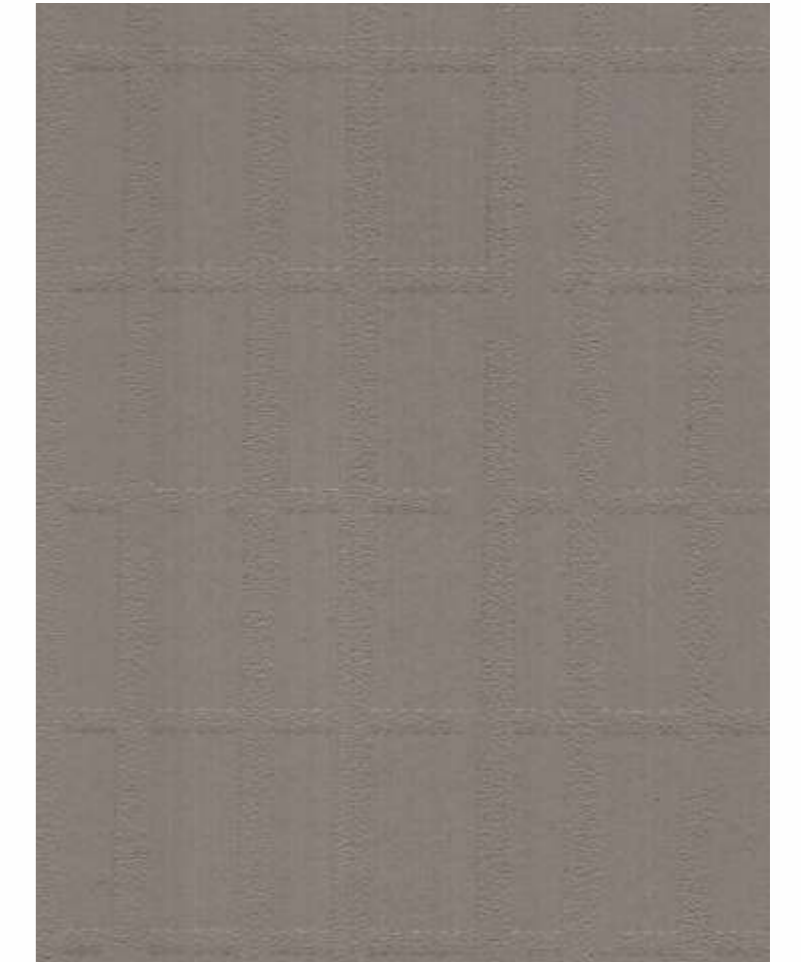
SUBTLE  
SPARKLE  
PLAYFUL  
MOVEMENT



Rustic-chic appeal with contemporary polish.

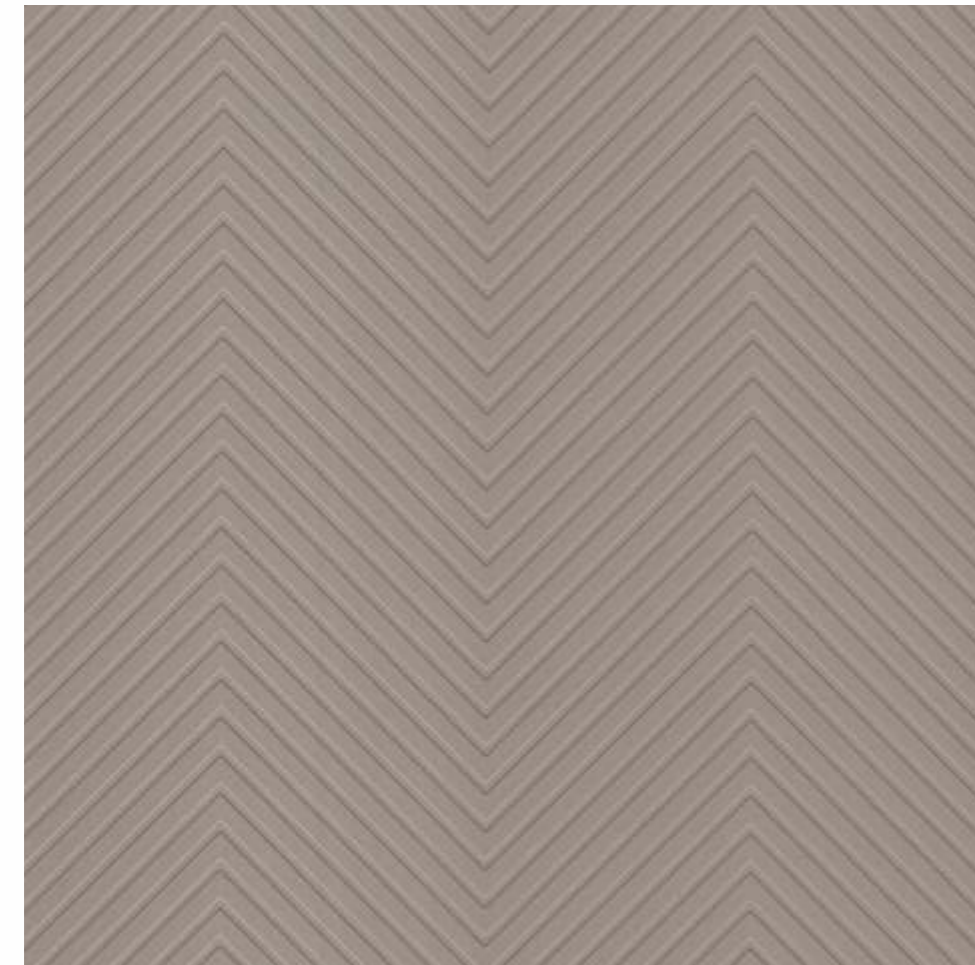


75 124 TF | ROMAN COFFEE



85 124 FP | ROMAN COFFEE

Subtle glow for soft, elegant spaces with understated charm.



71 164 ZZ | TUMBLE BEIGE



HG 5164 | TUMBLE BEIGE

Deep shade with a hint of sophistication for added depth.



MTX 5164 | TUMBLE BEIGE

### COOL CALM TONES

Gentle warm undertone for welcoming spaces in multiple rooms.

### DEEP SHADE ADDED DEPTH



HG 5119 | CERAMIC GREY



MTX 5119 | CERAMIC GREY

Subtle flecks for texture and character.



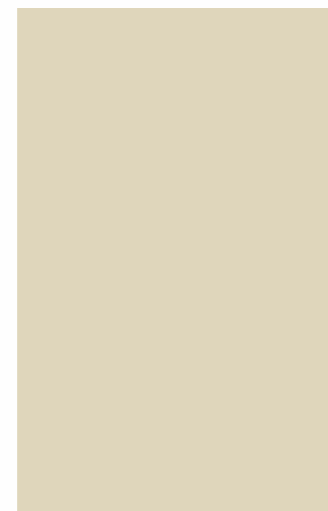
85 119 FP | CERAMIC GREY



89 119 WS | CERAMIC GREY



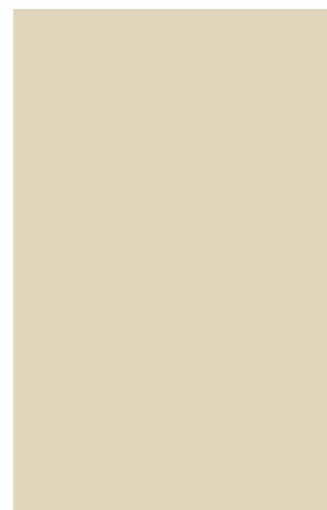
HG 5130  
DESERT IVORY



HG 5130 | DESERT IVORY

Sunlit, cheerful spaces  
that invite gatherings.

### GENTLE WARM UNDERTONE WELCOME



MTX 5130 | DESERT IVORY



84 128 DW | MYSORE IVORY

Creative vibe for zones  
and studios.



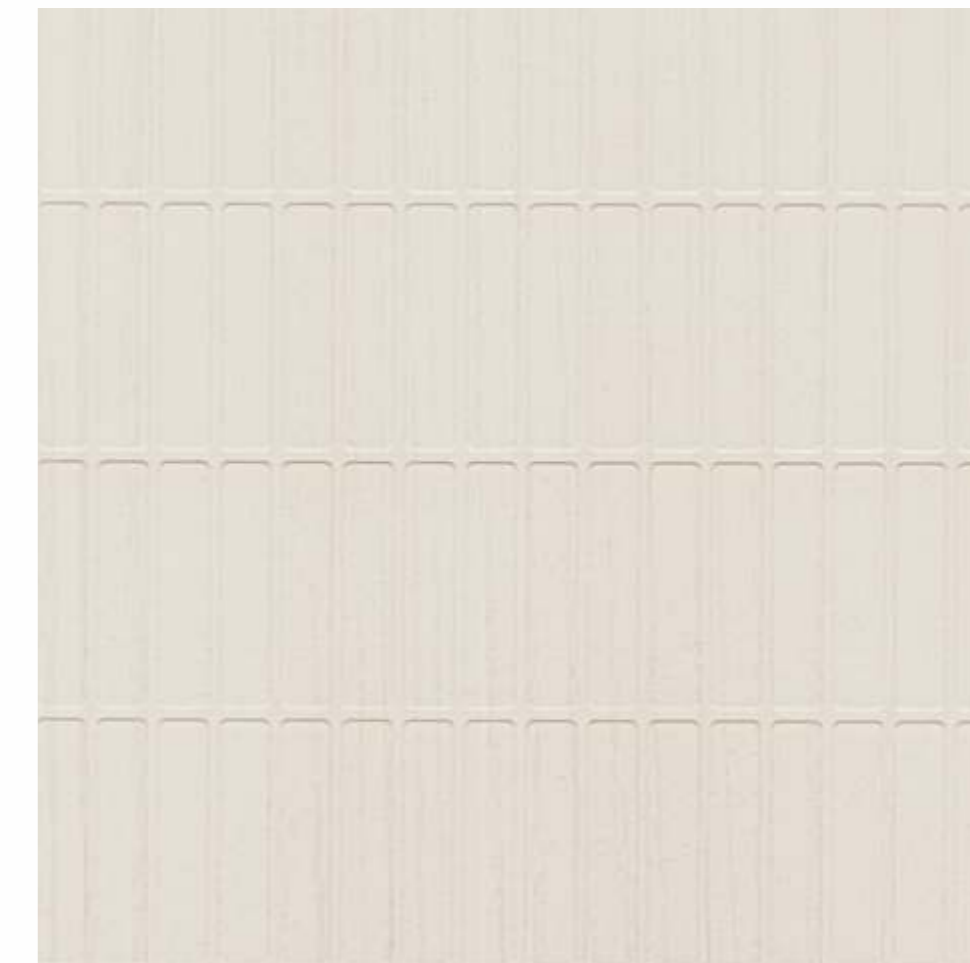
MTX 5128 | MYSORE IVORY

Bold contrast for  
dramatic statement  
rooms.

### LUXE GLOW INVITING BEDROOMS



HG 5128 | MYSORE IVORY



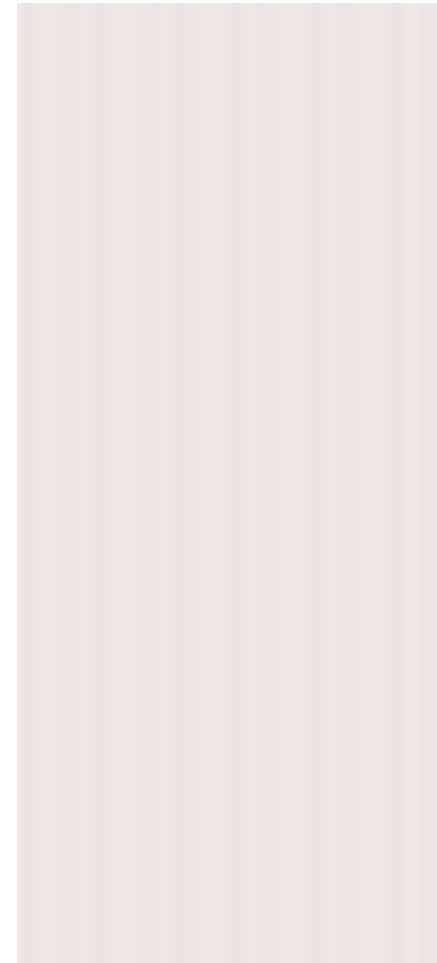
86 128 MW | MYSORE IVORY



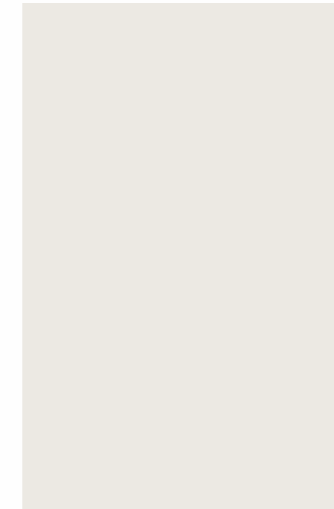
Character-rich interiors  
with tasteful detailing.

## SUBTLE FLECKS TEXTURED CHARACTER

Niche patterns that look  
dynamic and exude  
inimitable class.

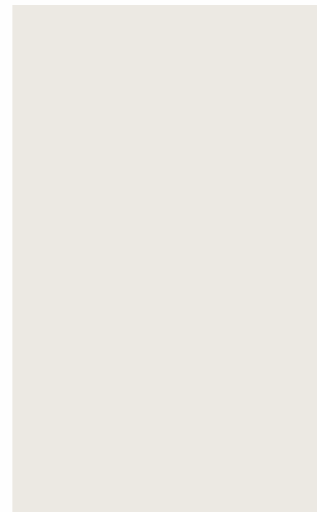


75 120 TF | BARLEY



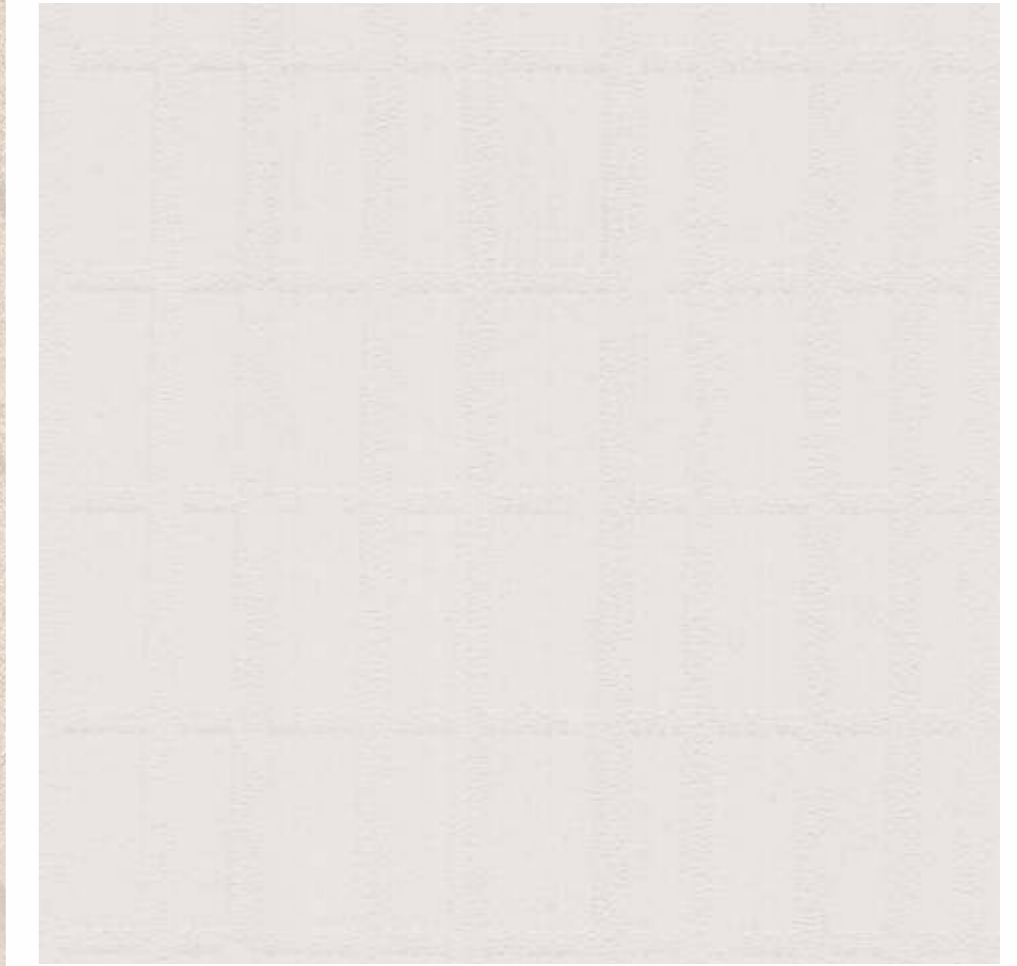
MTX 5120 | BARLEY

Subtle lines for  
specific corners as  
per requirements  
and design appeal.



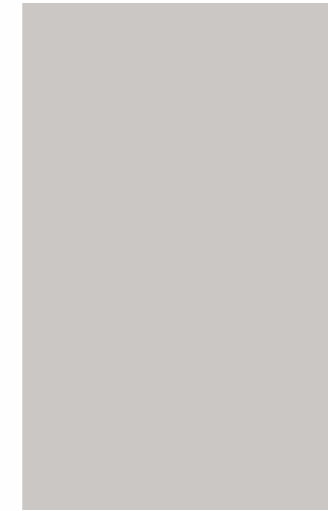
HG 5120 | BARLEY

MUTED  
TONES  
LOUD  
STYLE



85 120 FP | BARLEY

PRACTICAL  
DURABILITY  
REFINED  
LOOK



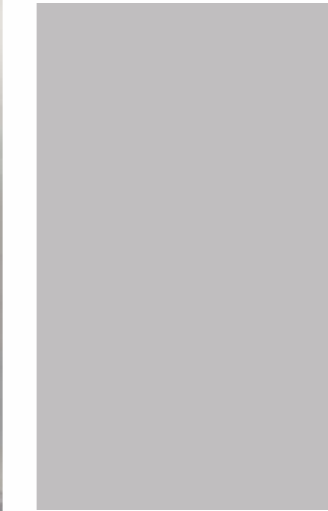
MTX 5112 | LIGHT GREY

Light tones for a calm  
vibe, ideal for relaxed  
homes.



HG 5112 | LIGHT GREY

Contemporary ease  
within an ambiance  
of luxurious realm  
with a pleasant  
verve.



MTX 5123 | GREY CLOUD

Fresh, lively zones  
that stay engaging  
year-round.



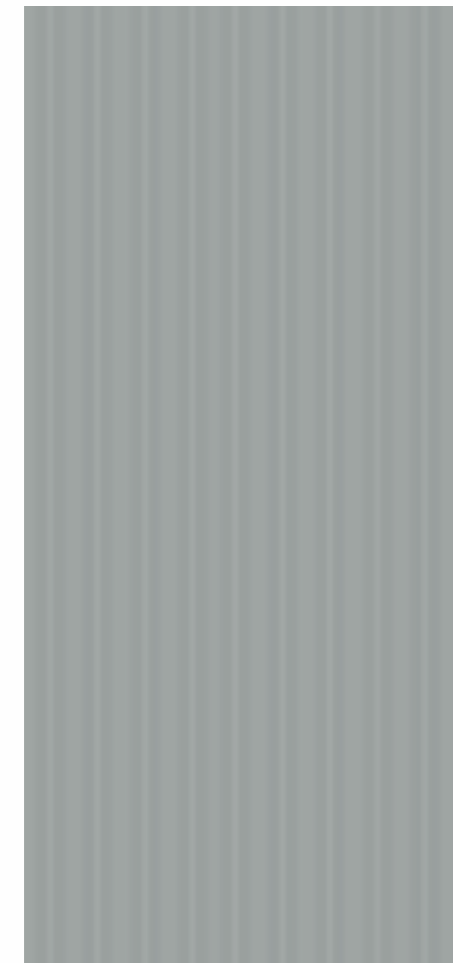
HG 5123 | GREY CLOUD

SUBTLE  
LINES, COZY  
CORNERS

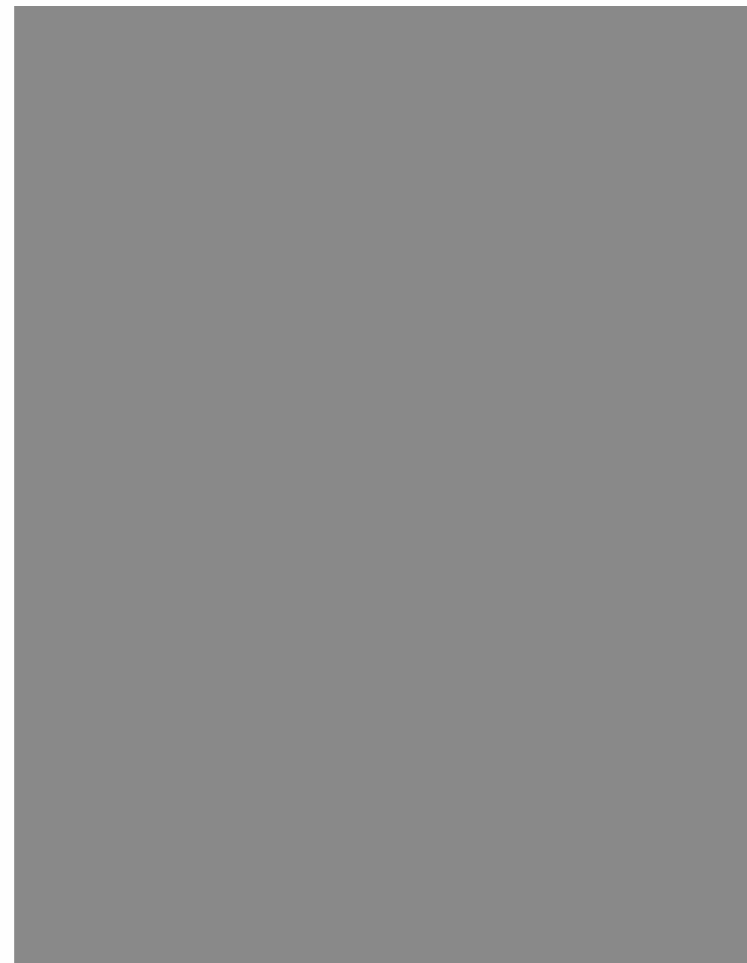


75 123 TF | TUMBLE BEIGE

Urban, easy-care looks  
with modern edge.



75 165 TF | TUMBLE BEIGE



89 165 WS | NICKLE GREY



MTX 5165 | NICKLE GREY



HG 5165 | NICKLE GREY

Balanced design that  
goes with metal and  
glass for cohesive  
styling.



HG 5127 | GREY



MTX 5127 | GREY

SUBTLE  
LINES, COZY  
CORNERS



Bold furniture-friendly tones that don't compete for attention.



85 122 FP | WARM GREY



84 122 DW | WARM GREY



MTX 5122 | WARM GREY

Elite saga of design eminence that looks striking and become conversation starters.



HG 5122 | WARM GREY

### SOFT NEUTRAL PALETTE

### DEEP CONTRAST VERSATILE BALANCE



89 129 WS | CARBON GREY



HG 5129 | CARBON GREY

Driftwood-inspired look for relaxed spaces with everyday practicality.



MTX 5129 | CARBON GREY

### BRIGHT SPLASH TO UPLIFT



Ultra-fine vertical pinstripes in alternating Mint and Cream to elongate walls and add height.



84 115 DW | DARK GREY



HG 5115 | DARK GREY

Large-scale flecks of Peach and Sage set in a warm sand-colored resin.



MTX 5115 | DARK GREY

### LAVISH EDGE OF EXCELL- ENCE



A blurred, oversized floral in Lavender and Buttercup that looks like hand-painted silk.



75 115 TF | DARK GREY



71 115 ZZ | DARK GREY

# I N D E X

SR. NO.	DESIGN NO.	DESIGN NAME	PAGE NO.	SR. NO.	DESIGN NO.	DESIGN NAME	PAGE NO.	SR. NO.	DESIGN NO.	DESIGN NAME	PAGE NO.
1	MTX 5107	OFF WHITE	39	33	MTX 5125	CUMIN	35	65	HG 5158	BEIGE	40
2	HG 5107	OFF WHITE	39	34	HG 5125	CUMIN	35	66	MTX 5162	SEA GREEN	34
3	SF 5107	OFF WHITE	39	35	MTX 5127	GREY	52	67	HG 5162	SEA GREEN	34
4	MTX 5108	SAND BASE	40	36	HG 5127	GREY	52	68	MTX 5163	PEBBLE	38
5	HG 5108	SAND BASE	40	37	MTX 5128	MYSORE IVORY	46	69	HG 5163	PEBBLE	38
6	MTX 5112	LIGHT GREY	49	38	HG 5128	MYSORE IVORY	46	70	85 163 FP	PEBBLE	16, 38
7	HG 5112	LIGHT GREY	49	39	86 128 MW	MYSORE IVORY	20, 46	71	71 163 ZZ	PEBBLE	25, 38
8	MTX 5115	DARK GREY	55	40	84 128 DW	MYSORE IVORY	07, 45	72	MTX 5164	TUMBLE BEIGE	43
9	HG 5115	DARK GREY	55	41	MTX 5129	CARBON GREY	54	73	HG 5164	TUMBLE BEIGE	43
10	75 115 TF	DARK GREY	23, 56	42	HG 5129	CARBON GREY	54	74	71 164 ZZ	TUMBLE BEIGE	24, 43
11	71 115 ZZ	DARK GREY	22, 56	43	89 129 WS	CARBON GREY	12, 54	75	MTX 5165	NICKLE GREY	52
12	84 115 DW	DARK GREY	06, 56	44	MTX 5130	DESERT IVORY	45	76	HG 5165	NICKLE GREY	52
13	MTX 5119	CERAMIC GREY	44	45	HG 5130	DESERT IVORY	45	77	75 165 TF	NICKLE GREY	22, 51
14	HG 5119	CERAMIC GREY	44	46	MTX 5131	ALPINE GREEN	34	78	89 165 WS	NICKLE GREY	12, 51
15	85 119 FP	CERAMIC GREY	17, 44	47	HG 5131	ALPINE GREEN	34	79	MTX 5171	SAGE GREEN	32
16	89 119 WS	CERAMIC GREY	10, 44	48	MTX 5132	LUCID DREAM	36	80	HG 5171	SAGE GREEN	32
17	MTX 5120	BARLEY	47	49	HG 5132	LUCID DREAM	36	81	84 171 DW	SAGE GREEN	09, 32
18	HG 5120	BARLEY	47	50	MTX 5133	TURQUOISE	31	82	89 171 WS	SAGE GREEN	11, 31
19	85 120 FP	BARLEY	18, 48	51	HG 5133	TURQUOISE	31	83	MTX 5174	PASTEL BROWN	35
20	75 120 TF	BARLEY	22, 47	52	MTX 5134	BLUE HORIZON	30	84	HG 5174	PASTEL BROWN	35
21	MTX 5122	WARM GREY	53	53	HG 5134	BLUE HORIZON	30	85	84 174 DW	PASTEL BROWN	07, 35
22	HG 5122	WARM GREY	53	54	89 134 WS	BLUE HORIZON	11, 30	86	89 174 WS	PASTEL BROWN	10, 36
23	85 122 FP	WARM GREY	15, 53	55	MTX 5137	GECKO GREEN	33	87	MTX 5175	SMOOTHIE ROSE	37
24	84 122 DW	WARM GREY	06, 53	56	HG 5137	GECKO GREEN	33	88	HG 5175	SMOOTHIE ROSE	37
25	MTX 5123	GREY CLOUD	50	57	85 137 FP	GECKO GREEN	16, 33	89	84 175 DW	SMOOTHIE ROSE	08, 37
26	HG 5123	GREY CLOUD	50	58	71 137 ZZ	GECKO GREEN	26, 33,	90	MTX 5190	OCEAN BLUE	29
27	75 123 TF	GREY CLOUD	22, 50	59	HG 5138	PINK BLISS	27	91	HG 5190	OCEAN BLUE	29
28	MTX 5124	ROMAN COFFEE	41	60	HG 5139	TIRAMISU	27	92	MTX 5198	WATER GREEN	31
29	HG 5124	ROMAN COFFEE	41	61	HG 5140	TRULY WHITE	28	93	HG 5198	WATER GREEN	31
30	85 124 FP	ROMAN COFFEE	17, 42	62	HG 5141	ACCENT BLUE	28	94	MTX 5199	FAIR BLUE	29
31	86 124 MW	ROMAN COFFEE	20, 41	63	HG 5142	STELLAR SILVER	28	95	HG 5199	FAIR BLUE	29
32	75 124 TF	ROMAN COFFEE	21, 42	64	MTX 5158	BEIGE	40	96	84 199 DW	FAIR BLUE	05, 29
								97	82 338 SC	SWIRL GREY	14

## TECHNICAL SPECIFICATIONS

SR NO.	PROPERTIES	UNIT	REQUIREMENT AS PER ISO 9001:2015	IfIL mica
1	Thickness	1 mm	± 10%	✓
2	Resistance to surface wear	Revolutions (Min.)	350 (Min.)	✓
3	Resistance to immersion in boiling water • Mass increase • Thickness increase • Appearance	% (Max.) % (Max.) Grade (Max.)	10.0 11.8 4	✓ ✓ ✓
4	Resistance to dry heat at 180° C	Grade (Min.)	4	✓
5	Dimension stability at elevated temperature • Longitudinal • Transverse	% (Max.) % (Max.)	0.55 1.025	✓ ✓
6	Dimension stability at 20° C • Longitudinal • Transverse	% (Max.) % (Max.)	0.375 0.6	✓ ✓
7	Resistance to impact by small diameter ball	'N' (Min.)	20	✓
8	Resistance to cracking	Grade (Min.)	4	✓
9	Resistance to scratching	'N' (Min.)	2	✓
10	Resistance to staining	Reagent 1+2 (Min.) Reagent 3+4 (Min.)	5 4	✓ ✓
11	Resistance to colour change • In xenon arc light • In enclosed carbon arc light	Wool standard (Max.) Wool standard (Max.)	6 5	✓ ✓
12	Resistance to cigarette burns	Grade (Min.)	3	✓
13	Resistance to steam	Grade (Min.)	4	✓
14	Appearance		Free From foreign particles	✓

\*All tests may not be valid for embossed and metallic laminates



PURE PHENOLIC PRODUCTS



LOW EMISSION



ANTI BACTERIAL



GENUINE THICKNESS



STAIN FREE



## INSTALLATION, CARE AND MAINTENANCE GUIDELINES

**Storage & Carrying :** Store the sheets horizontally with their face turned down. Place a thick hard board on top of the laminates to protect them from any kind of damage. Stock the laminates in such a way that older sheets will be used first. Store the laminates in a dry place to protect them from moisture. They should also be stored in such a way that they don't come in contact with the floor or walls. Always carry the sheets vertically. Don't slide the sheets, lift them while moving them from one place to another. Ideally 2 people should carry one sheet to avoid carelessness that can damage the surface.

**Stains :** The laminates are resistant to stains belonging to Group 1 and 2. Stains of Group 3 and 4 should not be spilled on the surface. In case of spillage, the stains should be immediately wiped off.

**Abrasives :** Abrasive pads, scouring powders or cleansers can permanently damage the laminates making them more susceptible to staining.

**Hot Objects :** Even though the laminates have high heat resistance, exposure to temperatures greater than 135°C is not recommended. Do not place hot frying pans or dishes directly from the oven or cooktop on the laminate surface. As a

precaution, use a trivet or insulated pad to protect the surface from heat generating appliances such as pressing irons, toasters, curling irons and electric cookers. Prolonged exposure to temperatures above 65°C may result in separation of the laminate from the substrate.

**Sharp Objects :** Never use knives or other sharp objects directly on the decorative surface. Use a chopping block or counter saver to protect the laminates.

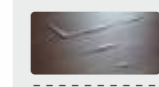
**Impact :** The laminates have excellent impact resistance. However, dropping heavy objects or deliberately hammering directly on the surface may cause chipping or cracking.

**Harsh chemicals :** Harsh chemicals such as oven cleaners, toilet cleaners, or drain cleaners will etch and discolor the decorative surface. The laminates are not designed to resist continual contact with these chemicals. If any of these products spill over the surface, remove immediately, rinse thoroughly, and wipe dry.

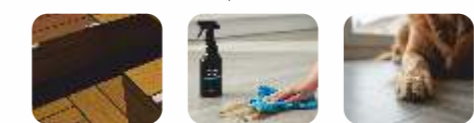
**Pasting Instructions :** Please remove moisture before application from surface between laminate and plywood. Avoid using Adhesive mix with water. Avoid pasting in humid weather.



Cutting a laminate sheet at an angle of 90 degree leads to development of cracks in corner after pasting. Therefore it is advisable to avoid cutting at an angle of 90 degrees.



No claim will be entertained for air bubbles



Avoid direct sunlight / continuous light. This may cause color fading.

TESTED OK Date: \_\_\_\_\_ Name: \_\_\_\_\_

### LIMITED LIFETIME WARRANTY

Limited Warranty: IFIL MICA warrants that, under normal use & service, the material & workmanship of their products shall conform to the standards set forth on the applicable technical data sheet for a period of twelve (12) months from the date of sale to the first consumer/ purchaser. Dealers & distributors are provided with the technical data sheets, which contain specific standards of performance of the product. In the event that an IFIL MICA product does not perform as warranted, the first purchaser's sole remedy shall be limited to repair or replacement of all or any part of the product, which is defective, at the manufacturer's sole discretion. This warranty is not transferable and expires upon resale or transfer by first purchaser. This warranty shall not apply to defects or damage arising from any of the following: Accidents, abuse or misuse, exposure to extreme temperature, improper fabrication or installation, improper maintenance. No other warranties, expressed or implied, are made. Under no circumstances shall the manufacturer be liable for any loss or damage arising from the purchase, use, or inability to use the product, or for any special, indirect, incidental, or consequential damages. No fabricator, installer, dealer, agent or employee of IFIL MICA has the authority to modify the obligation or limitation of this warranty. Terms of warranties shall be governed by Indian Laws and all disputes will be subject to exclusive jurisdiction of Kheda-Gujarat.

### WARNING

Prolonged exposure of the laminate surface to bleach will cause it to discolor. Acid based cleaners will permanently damage the laminates. Never allow these cleaners, or bottles, rags or other items contaminated with these cleaners, to come in contact with the laminates. Wipe such areas immediately and rinse thoroughly with water.

Group 1: Acetone, trichloromethane, toothpaste, hand cream, urea, alcoholic beverage, natural fruit, fruit drink, meat, vegetable oil, water, NaCl (solution), mustard, soap solution, paint remover (kerosene), phenol and citric acid.

Group 2: Coffee, black tea, milk (condensed and evaporated), cola beverages, vinegar, hydrogen peroxide (3% solution), ammonia (10% solution), nail polish remover, lipsticks, water color, laundry marking ink, ball point ink.

Group 3: Sodium hydroxide (25% solution), hydrogen peroxide (30% solution), concentrated vinegar (30% acetic acid), acid-based metal cleaners, shoe polish, hair coloring, iodine, boric acid, lacquers.

Group 4: Citric acid (Zero % solution), acetic acid (5% solution).